

WR1 Series

Water Regulator Port size(1/8, 1/4)

Air preparation unit

WR1 Series



How to Order

WR1 — * 01 B * — XC16

1
2
3
4
5
6

1 WR1

2 Screw

Blank : Rc
N : NPT
G : G(PF)

3 Port Size

01 : 1/8
02 : 1/4

4 Bracket Option

Blank : no bracket
B : bracket + panel mounting nut

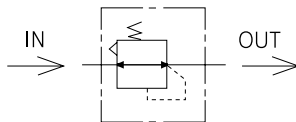
5 Pressure Gauge

Symbol	Specification		
	In/ Out Port Size	Unit	Remarks
Blank	RC	no gauge	Rc1/8" (Gauge port size)
	NPT		NPT 1/8" (Gauge port size)
P	RC	kgf/cm ² , MPa	Gauge Limitation 0~1.0MPa
	NPT	kgf/cm ² , psi	Gauge Limitation 0~145psi
P2	RC	MPa	Gauge Limitation 0~0.2MPa
	NPT		
P4	RC	MPa	Gauge Limitation 0~0.4MPa
	NPT		

6 Other Option

T : Tamper Resistant Kit
XC16 : Copper-free

Symbol



Specifications

Fluid	Water	
Max.operating pressure(MPa)	1.0	
Proof pressure(MPa)	2.0	
Set Pressure Range(MPa)	Standard	0.05 ~ 0.7
	Optional	0.05 ~ 0.2 0.05 ~ 0.4
Ambient and fluid temperature (°C)	0 ~ 60	
Exhaust Type	Non-relieving type	
Gauge Port Size	1/8"	
Weight(kg)	0.42	