

Series

O t



Features

- ONE ACTION INSERTS THE TUBE TO RELEASE AND CONNECT EASILY
- THE SQH TYPE HAS INTERIOR AND EXTERIOR HEXAGONAL SHAPES FOR EFFICIENT PIPING IN LIMITED SPACES
- THE MAIN BODY OF THE SQL AND SQT TYPES IS A ROTATING STRUCTURE FOR EFFICIENT PIPING THE SCREW SECTION HAS O-RINGS, OR IS SEALANT COATED

How to Order

SQ 06 - 01 S - X2-W

1 2 3 4 5

1 Model

2 Applicable Tube O. D.

04 : Ø4
06 : Ø6
08 : Ø8
10 : Ø10
12 : Ø12
16 : Ø16

3 Port Size

M5 : M5 x 0.8

01 : R(c) 1/8
02 : R(c) 1/4
03 : R(c) 3/8
04 : R(c) 1/2

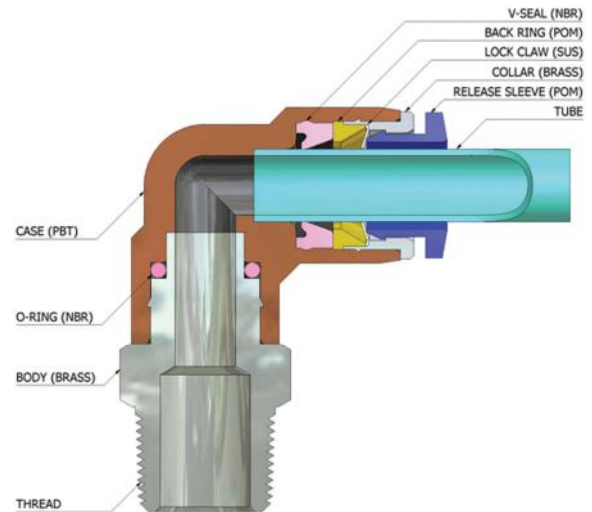
4 Sealant Screw

S : Sealant

5 Nickel Coated

Blank : Standard Type
X2 : Copper-free(Nickel Coated)

Structure



Specifications

Fluid	Air
Operating pressure range	0~150psi (0~9.9kgf/cm ²)
Ambient and Fluid Temperature	0~60 °C
Applicable Tube	Polyurethane tube, Nylon tube

Cautions

Be sure to have a full understanding before use and refer to safety cautions and common cautions

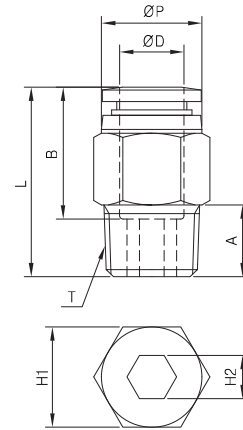
SQH



METRIC-BSPT(R)

Unit

MODEL	ØD (Tube Size)	T (Thread Size)	ØP	L	A	B	H1	H2 (Hex.)	Weight (g)
SQH 04-M5A	4	M5×0.8	10.0	20.8	4.6	14.7	Ø10	2	6.0
SQH 04-M5		M5×0.8		20.8	4.0		H10	-	7.0
SQH 04-01S		R 1/8		21.9	8.0		H10	3	9.0
SQH 04-02S		R 1/4		20.9	10.0		H14	3	16.0
SQH 06-M5A	6	M5×0.8	12.0	23.1	4.6	16.4	Ø12	2	10.0
SQH 06-M5		M5×0.8		23.1	4.0		H12	-	10.0
SQH 06-01S		R 1/8		22.4	8.0		H12	4	10.0
SQH 06-02S		R 1/4		21.9	10.0		H14	5	14.0
SQH 06-03S	R 3/8	22.9	11.0	H17	5	25.0			
SQH 08-01S	8	R 1/8	14.0	28.4	8.0	18.4	H14	5	15.0
SQH 08-02S		R 1/4		26.4	10.0		H14	6	16.0
SQH 08-03S		R 3/8		23.9	11.0		H17	6	24.0
SQH 08-04S		R 1/2		29.4	14.0		H19	6	49.0
SQH 10-01S	10	R 1/8	16.1	29.8	8.0	19.6	H17	5	21.0
SQH 10-02S		R 1/4		31.3	10.0		H17	6	24.0
SQH 10-03S		R 3/8		27.4	11.0		H17	8	24.0
SQH 10-04S		R 1/2		29.8	14.0		H19	8	45.0
SQH 12-02S	12	R 1/4	19.0	33.7	10.0	21.9	H19	6	30.0
SQH 12-03S		R 3/8		30.7	11.0		H19	8	29.0
SQH 12-04S		R 1/2		30.2	14.0		H19	8	38.0
SQH 16-03S	16	R 3/8	24	37.5	11.0	24	24	10	51.0
SQH 16-04S		R 1/2		40.5	14.0				65.0



SQ

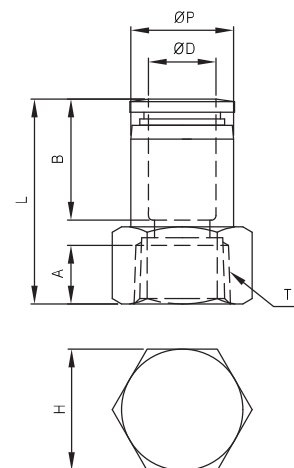
SQF



METRIC-BSPT(R)

Unit

MODEL	ØD (Tube Size)	T (Thread Size)	ØP	L	A	B	H (Hex.)	Weight (g)
SQF 04-01	4	Rc 1/8	10.0	27.0	9.0	14.7	14	17.0
SQF 04-02		Rc 1/4		29.0	11.0		17	22.0
SQF 06-01	6	Rc 1/8	12.0	28.2	9.0	16.4	14	18.0
SQF 06-02		Rc 1/4		30.2	11.0		17	24.0
SQF 06-03	Rc 3/8	31.2	12.0	22	38.0			
SQF 08-01	8	Rc 1/8	14.0	29.4	9.0	18.4	14	19.0
SQF 08-02		Rc 1/4		31.4	11.0		17	24.0
SQF 08-03		Rc 3/8		32.4	12.0		22	39.0
SQF 08-04		Rc 1/2		34.4	14.0		24	41.0
SQF 10-01	10	Rc 1/8	16.4	32.5	9.0	19.6	17	31.0
SQF 10-02		Rc 1/4		32.5	11.0		17	26.0
SQF 10-03		Rc 3/8		33.5	12.0		22	41.0
SQF 10-04		Rc 1/2		35.5	14.0		24	43.0
SQF 12-02	12	Rc 1/4	19.0	37.1	11.0	21.9	22	54.0
SQF 12-03		Rc 3/8		37.1	12.0		22	46.0
SQF 12-04		Rc 1/2		39.1	14.0		24	50.0



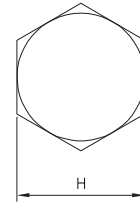
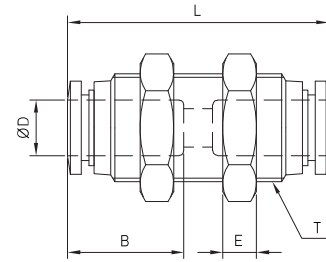
SQE-00



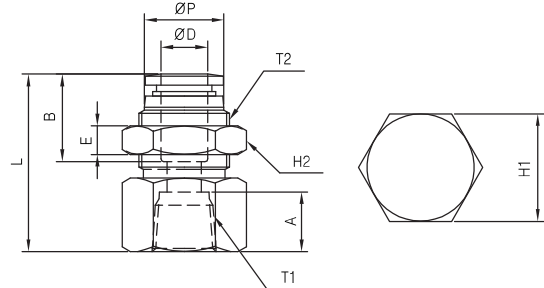
METRIC-BSPT(R)

MODEL	ØD (Tube Size)	T (Thread Size)	L	E	B	H (Hex.)	Weight (g)
SQE 04-00	4	M12×1.0	35.5	4	14.7	14	20.0
SQE 06-00	6	M14×1.0	39.9	4	16.4	17	29.0
SQE 08-00	8	M16×1.0	42.2	5	18.4	19	39.0
SQE 10-00	10	M20×1.0	45.0	5	19.6	24	66.0
SQE 12-00	12	M22×1.0	50.3	5	21.9	26	83.0
SQE 16-00	16	M27×1.0	53.1	6	24	32	135

Unit



SQE



METRIC-BSPT(R)

MODEL	ØD (Tube Size)	T1 (Thread Size)	ØP	T2 (Thread Size)	L	E	A	B	H1 (Hex.)	H2 (Hex.)	Weight (g)	
SQE 04-01	4	Rc 1/8	10.0	M12×1.0	27.0	4	9.0	14.7	14	14	20.0	
SQE 06-01	6	Rc 1/8	12.0	M14×1.0	30.2	4	9.0	16.4	17	17	34.0	
SQE 06-02		Rc 1/4			30.2				11.0	17	28.0	
SQE 08-01	8	Rc 1/8	14.0	M16×1.0	31.4	5	9.0	18.4	19	19	45.0	
SQE 08-02		Rc 1/4			31.4				11.0		19	40.0
SQE 08-03		Rc 3/8			32.4				12.0		22	46.0
SQE 10-02	10	Rc 1/4	16.1	M20×1.0	33.5	5	11.0	19.6	24	24	71.0	
SQE 10-03		Rc 3/8			33.5				12.0		24	66.0
SQE 10-04		Rc 1/2			35.5				14.0		24	58.0
SQE 12-02	12	Rc 1/4	19.0	M22×1.0	38.3	5	11.0	21.9	24	26	85.0	
SQE 12-03		Rc 3/8			38.3				12.0		24	76.0
SQE 12-04		Rc 1/2			40.3				14.0		24	70.0

Unit

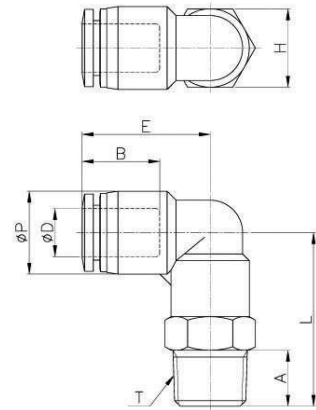
SQL



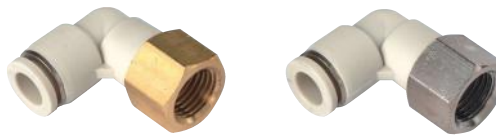
METRIC-BSPT(R)

Unit

MODEL	ØD (Tube Size)	T (Thread Size)	ØP	L	E	A	B	H (Hex.)	Weight (g)
SQL04-M5	4	M5×0.8p	10.5	20.5	18.5	4.0	14.8	10	6.0
SQL04-01S		R1/8		24.5		8.0		10	10.0
SQL04-02S		R1/4		26.5		10.0		14	15.0
SQL06-M5	6	M5×0.8p	12.5	22.5	20.3	4.0	16.4	12	7.0
SQL06-01S		R 1/8		26.5		8.0		12	13.0
SQL06-02S		R 1/4		29.5		10.0		14	19.0
SQL06-03S		R 3/8		30.5		11.0		17	27.0
SQL08-01S	8	R 1/8	14.8	28.0	22.9	8.0	18.3	14	18.0
SQL08-02S		R 1/4		31.0		10.0		14	22.0
SQL08-03S		R 3/8		32.0		11.0		17	27.0
SQL08-04S		R 1/2		35.0		14.0		21	43.0
SQL10-01S	10	R 1/8	17.5	28.5	24.6	8.0	20.2	17	26.0
SQL10-02S		R 1/4		31.5		10.0		17	28.0
SQL10-03S		R 3/8		32.5		11.0		17	30.0
SQL10-04S		R 1/2		35.5		14.0		21	48.0
SQL12-02S	12	R 1/4	20.5	34.4	28.7	10.0	22.9	19	40.0
SQL12-03S		R 3/8		35.4		11.0		19	43.0
SQL12-04S		R 1/2		38.4		14.0		21	52.0
SQL16-03S	16	R 3/8	25.5	42.8	32.8	11.0	24.1	24	69.0
SQL16-04S		R 1/2		45.8		14.0		24	77.0



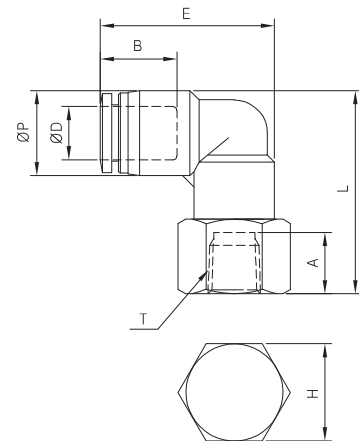
SQLF



METRIC-BSPT(R)

Unit

MODEL	ØD (Tube Size)	T (Thread Size)	ØP	L	E	A	B	H (Hex.)	Weight (g)
SQLF 04-M5	4	M5×0.8	10.5	26.7	23.6	8.0	14.9	10	10.0
SQLF 04-01		Rc 1/8		27.7		9.0		14	15.0
SQLF 04-02		Rc 1/4		29.7		11.0		17	20.0
SQLF 06-M5	6	M5×0.8	12.5	29.7	26.3	8.0	16.4	12	16.0
SQLF 06-01		Rc 1/8		30.7		9.0		14	17.0
SQLF 06-02		Rc 1/4		32.7		11.0		17	23.0
SQLF 06-03		Rc 3/8		33.7		12.0		22	36.0
SQLF 08-01	8	Rc 1/8	14.8	33.4	30.3	9.0	18.7	14	19.0
SQLF 08-02		Rc 1/4		35.4		11.0		17	26.0
SQLF 08-03		Rc 3/8		36.4		12.0		22	38.0
SQLF 10-02	10	Rc 1/4	17.5	37.2	33.0	11.0	20.1	17	29.0
SQLF 10-03		Rc 3/8		38.2		12.0		22	42.0
SQLF 10-04		Rc 1/2		40.2		14.0		24	44.0
SQLF 12-02	12	Rc 1/4	20.5	41.6	38.1	11.0	22.8	19	40.0
SQLF 12-03		Rc 3/8		42.6		12.0		22	48.0
SQLF 12-04		Rc 1/2		44.6		14.0		24	49.0



Series

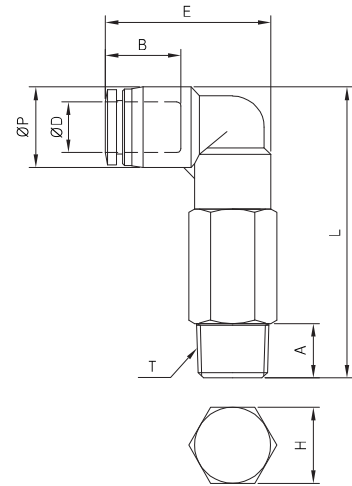
SQW



METRIC-BSPT(R)

Unit

MODEL	ØD (Tube Size)	T (Thread Size)	ØP	L	E	A	B	H (Hex.)	Weight (g)
SQW 04-M5	4	M5×0.8	10.5	38.2	23.6	4.1	14.9	10	18.0
SQW 04-01S		R1/8		40.7		8.0		10	16.0
SQW 04-02S		R1/4		42.7		10.0		14	28.0
SQW 06-M5	6	M5×0.8	12.5	43.7	26.3	4.1	16.4	12	25.0
SQW 06-01S		R 1/8		46.2		8.0		12	25.0
SQW 06-02S		R 1/4		48.2		10.0		14	33.0
SQW 06-03S		R 3/8		49.2		11.0		17	48.0
SQW 08-01S	8	R 1/8	14.8	51.4	30.3	8.0	18.7	14	37.0
SQW 08-02S		R 1/4		53.4		10.0		14	37.0
SQW 08-03S		R 3/8		54.4		11.0		17	60.0
SQW 08-04S		R 1/2		57.4		14.0		22	90.0
SQW 10-01S	10	R 1/8	17.5	56.4	33.0	8.0	20.1	17	65.0
SQW 10-02S		R 1/4		58.4		10.0		17	65.0
SQW 10-03S		R 3/8		59.4		11.0		17	57.0
SQW 10-04S		R 1/2		62.4		14.0		22	100.0
SQW 12-02S	12	R 1/4	20.5	66.1	38.1	10.0	22.8	19	90.0
SQW 12-03S		R 3/8		67.1		11.0		19	84.0
SQW 12-04S		R 1/2		70.1		14.0		22	116.0



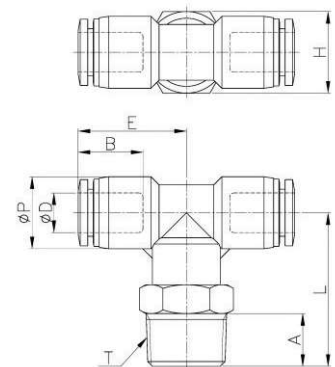
SQT



METRIC-BSPT(R)

Unit

MODEL	ØD (Tube Size)	T (Thread Size)	ØP	L	E	A	B	H (Hex.)	Weight (g)
SQT 04-M5	4	M5×0.8p	10.5	20.5	18.5	4.0	14.8	10	10.0
SQT 04-01S		R1/8		24.5		8.0		10	11.0
SQT 04-02S		R1/4		26.5		10.0		14	17.0
SQT 06-M5	6	M5×0.8p	12.5	22.5	20.3	4.0	16.4	12	15.0
SQT 06-01S		R 1/8		26.5		8.0		12	17.0
SQT 06-02S		R 1/4		29.5		10.0		14	21.0
SQT 06-03S		R 3/8		30.5		11.0		17	29.0
SQT 08-01S	8	R 1/8	15.0	28.0	22.6	8.0	18.3	14	21.0
SQT 08-02S		R 1/4		31.0		10.0		14	24.0
SQT 08-03S		R 3/8		32.0		11.0		17	31.0
SQT 08-04S		R 1/2		35.0		14.0		21	54.0
SQT 10-01S	10	R 1/8	17.5	28.5	25.2	8.0	20.2	17	33.0
SQT 10-02S		R 1/4		31.5		10.0		17	35.0
SQT 10-03S		R 3/8		32.5		11.0		17	36.0
SQT 10-04S		R 1/2		35.5		14.0		21	60.0
SQT 12-02S	12	R 1/4	20.5	34.4	28.7	10.0	22.9	19	47.0
SQT 12-03S		R 3/8		35.4		11.0		19	50.0
SQT 12-04S		R 1/2		38.4		14.0		21	60.0
SQT 16-03S	16	R 3/8	25.5	42.8	32.8	11.0	24.1	24	86.0
SQT 16-04S		R 1/2		45.8		14.0		24	94.0



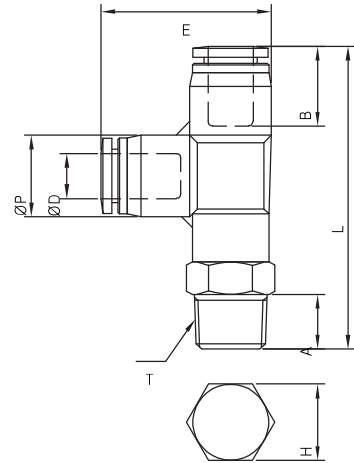
SQY



METRIC-BSPT(R)

Unit

MODEL	ØD (Tube Size)	T (Thread Size)	ØP	L	E	A	B	H (Hex.)	Weight (g)
SQY 04-M5	4	M5×0.8	10.6	41.6	24.9	4.0	14.9	10	10.0
SQY 04-01S		R1/8		45.1		8.0		10	12.0
SQY 04-02S		R1/4		47.1		10.0		14	18.0
SQY 06-M5	6	M5×0.8	13.0	44.9	27.9	4.0	16.4	12	15.0
SQY 06-01S		R 1/8		48.4		8.0		12	19.0
SQY 06-02S		R 1/4		51.4		10.0		14	23.0
SQY 06-03S		R 3/8		52.4		11.0		17	31.0
SQY 08-01S	8	R 1/8	15.0	52.5	31.3	8.0	18.7	14	17.0
SQY 08-02S		R 1/4		55.5		10.0		14	25.0
SQY 08-03S		R 3/8		56.5		11.0		17	30.0
SQY 08-04S		R 1/2		59.5		14.0		21	54.0
SQY 10-01S	10	R 1/8	18.0	55.7	34.7	8.0	20.1	17	34.0
SQY 10-02S		R 1/4		58.7		10.0		17	36.0
SQY 10-03S		R 3/8		59.7		11.0		17	38.0
SQY 10-04S		R 1/2		62.7		14.0		21	60.0
SQY 12-02S	12	R 1/4	20.8	65.0	40.5	10.0	22.8	19	50.0
SQY 12-03S		R 3/8		66.0		11.0		19	52.0
SQY 12-04S		R 1/2		69.0		14.0		21	66.0



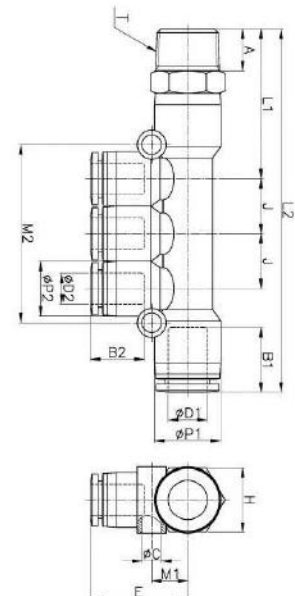
SQYT-R



METRIC-BSPT(R)

Unit

MODEL	ØD1 (Tube Size)	ØD2 (Tube Size)	ØP1	ØP2	T	L1	L2	E	ØC
SQYT 04-06-01S	6	4	12.5	10.5	R1/8	30.1	72.1	19.5	3.3
SQYT 04-06-02S		4		10.5	R1/4	33.1	75.1	19.5	
6M-6T-67	8	4	14.5	10.5	R1/8	30.9	74.1	20.7	4.3
6M-6T-68		4		10.5	R1/4	33.9	77.1	20.7	
6R-6T-67		6		12.5	R 1/8	31.9	80.1	22.2	
6R-6T-68		6		12.5	R 1/4	34.9	83.1	22.2	
SQYT 06-10-02S	10	6	17.5	12.5	R 1/4	37.9	89.6	22.8	4.3
SQYT 06-10-03S		6		12.5	R 3/8	38.9	90.6	22.8	
SQYT 08-10-02S		8		14.5	R 1/4	38.5	94.9	25.7	
SQYT 08-10-03S		8		14.5	R 3/8	39.5	95.9	25.7	
MODEL	A	B1	B2	J	M1	M2	H (Hex.)	ORIFICE	Weight (g)
SQYT 04-06-01S	8	16.4	14.8	10.5	7.6	34.0	12	3	20
SQYT 04-06-02S	10		14.8	10.5	7.6	34.0	14	3	25.2
6M-6T-67	8	18.3	14.8	10.5	9.2	34.8	14	3	23.1
6M-6T-68	10		14.8	10.5	9.2	34.8	14	3	30
6R-6T-67	8		16.4	12.5	9.3	41.1	14	5	26.8
6R-6T-68	10		16.4	12.5	9.3	41.1	14	5	33
SQYT 06-10-02S	10	20.2	16.4	12.5	9.5	41.7	17	5	40.3
SQYT 06-10-03S	11		16.4	12.5	9.5	41.7	17	5	47
SQYT 08-10-02S	10		18.3	14.5	9.5	47.0	17	6.8	44.3
SQYT 08-10-03S	11		18.3	14.5	9.5	47.0	17	6.8	50



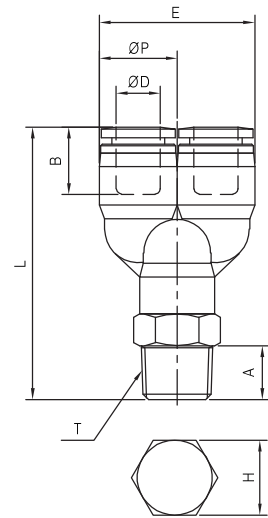
Series

SQU



METRIC-BSPT(R)

MODEL	ØD (Tube Size)	T (Thread Size)	ØP	L	E	A	B	Unit	
								H (Hex.)	Weight (g)
SQU 04-M5	4	M5×0.8	10.5	39.5	21.0	4.0	15.6	10	11.0
SQU 04-01S		R 1/8		43.5		8.0		10	12.0
SQU 04-02S		R 1/4		45.5		10.0		14	18.0
SQU 06-M5	6	M5×0.8	12.5	40.4	25.0	4.0	16.9	12	16.0
SQU 06-01S		R 1/8		44.4		8.0		12	17.0
SQU 06-02S		R 1/4		47.4		10.0		14	22.0
SQU 06-03S	R 3/8	48.4	11.0	17	32.0				
SQU 08-01S	8	R 1/8	14.5	47.8	29.0	8.0	19.0	14	22.0
SQU 08-02S		R 1/4		50.8		10.0		14	24.0
SQU 08-03S		R 3/8		51.8		11.0		17	38.0
SQU 08-04S		R 1/2		54.8		14.0		21	50.0
SQU 10-01S	10	R 1/8	17.6	51.2	35.2	8.0	20.2	17	35.0
SQU 10-02S		R 1/4		54.2		10.0		17	37.0
SQU 10-03S		R 3/8		55.2		11.0		17	40.0
SQU 10-04S		R 1/2		58.2		14.0		21	63.0
SQU 12-02S	12	R 1/4	21.0	59.1	42.0	10.0	22.6	19	52.0
SQU 12-03S		R 3/8		60.1		11.0		19	53.0
SQU 12-04S		R 1/2		63.1		14.0		21	66.0



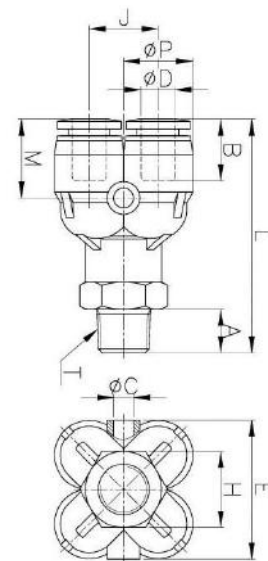
SQUD



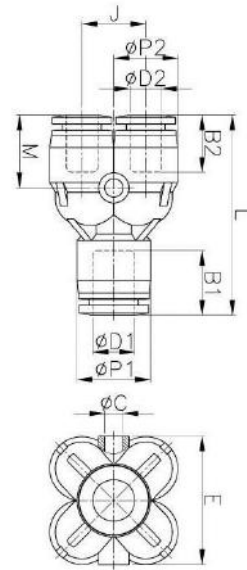
METRIC-BSPT(R)

MODEL	ØD (Tube Size)	ØP	T	L	E	Unit	
						J	ØC
ui z O 4B146u	4	10.5	R1/8	41.7	21.2	10.6	3.3
ui z O 4B148u	4	10.5	R1/4	44.7	21.2	10.6	3.3
ui z O 4D146u	6	12.8	R1/8	43	25.6	12.7	3.3
ui z O 4D148u	6	12.8	R1/4	46	25.6	12.7	3.3

MODEL	A	B	M	H (Hex.)	ORIFICE	Weight (g)
ui z O 4B146u	8	15.3	13.9	10	4	19
ui z O 4B148u	10	15.3	13.9	14	4	23
ui z O 4D146u	8	16.4	15.5	12	6	24
ui z O 4D148u	10	16.4	15.5	14	6	30



SQDU



METRIC-BSPT(R)

Unit

MODEL	ØD1 (Tube Size)	ØD2 (Tube Size)	ØP1	ØP2	L	E
SQDU 06-04	6	4	12.8	10.5	35.7	21.2
SQDU 08-06	8	6	14.6	12.8	39.9	25.6

MODEL	J	ØC	B1	B2	M	ORIFICE	Weight (g)
SQDU 06-04	10.6	3.3	16.4	15.3	13.9	2.4	13
SQDU 08-06	12.7	3.3	18.3	16.4	15.5	4	18

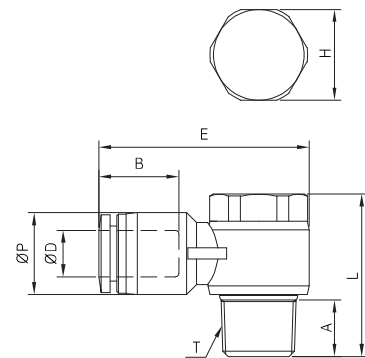
SQV



METRIC-BSPT(R)

Unit

MODEL	ØD (Tube Size)	T (Thread Size)	ØP	L	E	A	B	H (Hex.)	Weight (g)
SQV 04-M5	4	M5×0.8	10.5	18.2	25.3	3.6	14.9	8	8.0
SQV 04-01S		R 1/8		25.0	30.4	7.5		11	15.0
SQV 04-02S		R 1/4		28.8	34.4	10.0		15	27.0
SQV 06-M5	6	M5×0.8	12.5	18.2	27.7	3.6	16.4	8	9.0
SQV 06-01S		R 1/8		25.0	31.2	7.5		11	16.0
SQV 06-02S		R 1/4		28.8	35.2	10.0		15	27.0
SQV 06-03S		R 3/8		32.7	38.7	11.0		19	48.0
SQV 08-01S	8	R 1/8	14.5	25.0	33.3	7.5	18.7	11	17.0
SQV 08-02S		R 1/4		28.8	37.3	10.0		15	28.0
SQV 08-03S		R 3/8		32.7	40.3	11.0		19	50.0
SQV 08-04S		R 1/2		39.0	46.2	14.0		24	77.0
SQV 10-02S	10	R 1/4	17.5	28.8	38.8	10.0	20.1	15	32.0
SQV 10-03S		R 3/8		32.7	42.1	11.0		19	51.0
SQV 10-04S		R 1/2		39.0	47.3	14.0		24	78.0
SQV 12-03S	12	R 3/8	20.5	32.7	45.1	11.0	22.8	19	53.0
SQV 12-04S		R 1/2		39.0	50.0	14.0		24	82.0



Series

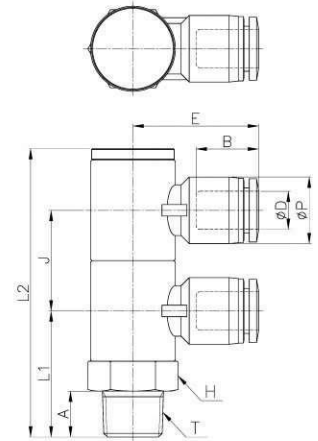
SQVD



METRIC-BSPT(R)

Unit

MODEL	∅D (Tube Size)	∅P	T	L1	L2	E	A	B	J	H (Hex.)	ORIFICE	Weight (g)
SQVD 04-01S	4	10.5	R 1/8	22.5	51.8	23.3	8	14.8	17.9	14	3.2	37
SQVD 04-02S			R 1/4	27.5	62.8	25.1	10	14.8	21.9	17	3.2	59
SQVD 04-03S			R 3/8	29.0	64.8	27.0	11	14.8	21.9	21	3.2	92
SQVD 06-01S	6	12.5	R 1/8	22.5	51.8	24.1	8	16.4	17.9	14	4	38
SQVD 06-02S			R 1/4	27.5	62.8	26.0	10	16.4	21.9	17	5	61
SQVD 06-03S			R 3/8	29.0	64.8	27.9	11	16.4	21.9	21	5	93
SQVD 06-04S	R 1/2	34.1	73.4	29.3	14	16.4	23.9	24	5	137		
SQVD 08-01S	8	14.5	R 1/8	22.5	51.8	25.6	8	18.3	17.9	14	5	40
SQVD 08-02S			R 1/4	27.5	62.8	27.4	10	18.3	21.9	17	7	62
SQVD 08-03S			R 3/8	29.0	64.8	29.3	11	18.3	21.9	21	7	94
SQVD 08-04S	R 1/2	34.1	73.4	30.7	14	18.3	23.9	24	7	138		
SQVD 10-01S	10	17.5	R 1/8	22.5	51.8	28.1	8	20.2	17.9	14	5	44
SQVD 10-02S			R 1/4	27.5	62.8	29.8	10	20.2	21.9	17	8	66
SQVD 10-03S			R 3/8	29.0	64.8	31.9	11	20.2	21.9	21	8	99
SQVD 10-04S	R 1/2	34.1	73.4	33.7	14	20.2	23.9	24	8	142		
SQVD 12-02S	12	20.5	R 1/4	27.5	62.8	33.0	10	22.9	21.9	17	8	72
SQVD 12-03S			R 3/8	29.0	64.8	35.1	11	22.9	21.9	21	8	105
SQVD 12-04S			R 1/2	34.1	73.4	37.4	14	22.9	23.9	24	8	149



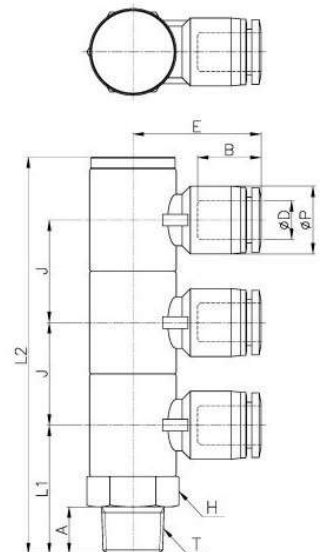
SQVT



METRIC-BSPT(R)

Unit

MODEL	∅D (Tube Size)	∅P	T	L1	L2	E	A	B	J	H (Hex.)	ORIFICE	Weight (g)
SQVT 04-01S	4	10.5	R 1/8	22.5	69.7	23.3	8	14.8	17.9	14	3.2	48
SQVT 04-02S			R 1/4	27.5	84.7	25.1	10		21.9	17	3.2	76
SQVT 04-03S			R 3/8	29.0	86.7	27.0	11		21.9	21	3.2	117
SQVT 04-04S	R 1/2	34.1	97.3	29.0	14	23.9	24	3.2	174			
SQVT 06-01S	6	12.5	R 1/8	22.5	69.7	24.1	8	16.4	17.9	14	4	50
SQVT 06-02S			R 1/4	27.5	84.7	26.0	10		21.9	17	5	79
SQVT 06-03S			R 3/8	29.0	86.7	27.9	11		21.9	21	5	115
SQVT 06-04S	R 1/2	34.1	97.3	29.3	14	23.9	24	5	176			
SQVT 08-01S	8	14.5	R 1/8	22.5	69.7	25.6	8	18.3	17.9	14	5	53
SQVT 08-02S			R 1/4	27.5	84.7	27.4	10		21.9	17	7	86
SQVT 08-03S			R 3/8	29.0	86.7	29.3	11		21.9	21	7	121
SQVT 08-04S	R 1/2	34.1	97.3	30.7	14	23.9	24	7	177			
SQVT 10-01S	10	17.5	R 1/8	22.5	69.7	28.1	8	20.2	17.9	14	5	59
SQVT 10-02S			R 1/4	27.5	84.7	29.8	10		21.9	17	8	87
SQVT 10-03S			R 3/8	29.0	86.7	31.9	11		21.9	21	8	128
SQVT 10-04S	R 1/2	34.1	97.3	33.7	14	23.9	24	8	184			
SQVT 12-02S	12	20.5	R 1/4	27.5	84.7	33.0	10	22.9	21.9	17	8	98
SQVT 12-03S			R 3/8	29.0	86.7	35.1	11		21.9	21	8	137
SQVT 12-04S			R 1/2	34.1	97.3	37.4	14		23.9	24	8	194



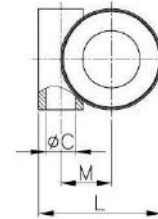
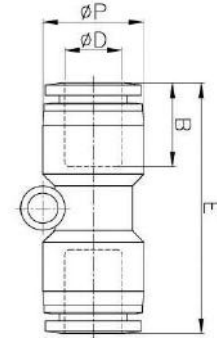
SQH-00



METRIC-BSPT(R)

Unit

MODEL	ØD (Tube Size)	ØP	L	E	ØC	B	M	Weight (g)
SQH 04-00	4	10.5	12.8	33.9	3.3	14.8	4.5	4.0
SQH 06-00	6	12.5	15.3	36.4	3.3	16.4	6.0	7.0
SQH 08-00	8	14.8	18.4	39.2	4.5	18.3	7.5	9.0
SQH 10-00	10	17.5	20.1	43.5	4.3	19.7	7.8	13.0
SQH 12-00	12	20.5	23.7	48.3	4.3	22.9	9.9	20.0
SQH 16-00	16	25.5	-	51.6	-	24.1	-	29.0



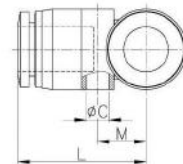
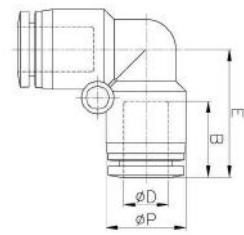
SQL-00



METRIC-BSPT(R)

Unit

MODEL	ØD (Tube Size)	ØP	L	E	ØC	B	M	Weight (g)
SQL 04-00	4	10.5	18.7	18.7	3.3	14.8	6.9	5.0
SQL 06-00	6	12.5	21.3	21.3	4.2	16.4	8.4	6.0
SQL 08-00	8	14.8	23.6	23.6	4.2	18.3	8.9	9.0
SQL 10-00	10	17.5	25.4	25.4	4.3	20.2	10.9	13.0
SQL 12-00	12	20.5	29.9	29.9	4.3	22.9	12.4	22.0
SQL 16-00	16	20.5	34.3	34.3	5.3	24.1	15.9	36.0



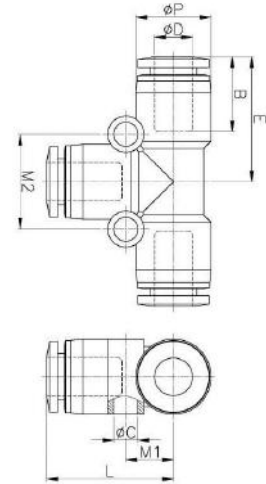
SQT-00



METRIC-BSPT(R)

Unit

MODEL	ØD (Tube Size)	ØP	L	E	ØC	B	M1	M2	Weight (g)
SQT 04-00	4	10.5	18.7	18.0	3.3	14.8	6.8	12.8	7.0
SQT 06-00	6	12.5	21.0	20.8	3.3	16.4	7.9	15.8	10
SQT 08-00	8	14.8	23.6	22.6	4.5	18.3	9.7	19.3	13.0
SQT 10-00	10	17.5	25.5	24.3	4.3	19.7	10.9	21.8	19.0
SQT 12-00	12	20.5	29.9	28.7	4.3	22.9	12.4	24.6	29.0
SQT 16-00	16	25.5	34.3	34.3	5.3	24.1	15.9	31.8	50.0



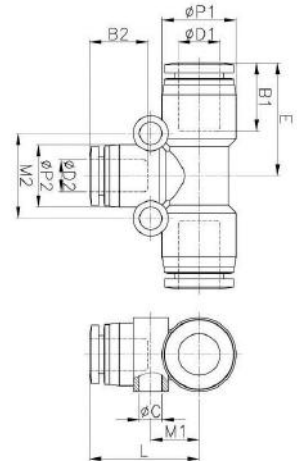
SQT-R



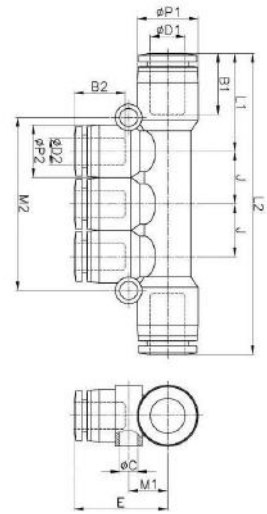
METRIC-BSPT(R)

Unit

MODEL	ØD1 (Tube Size)	ØD2 (Tube Size)	ØP1	ØP2	L	E	ØC	B1	B2	M1	M2	ORIFICE	Weight (g)
SQT 04-06	6	4	12.5	10.4	19	20.8	3.3	16.4	14.8	7.9	13.8	3.0	9.0
SQT 04-08	8	4	14.8	10.5	20	21.6	4.5	18.3	14.8	9.7	15.0	3.0	11.0
SQT 06-08	8	6	14.8	12.5	21.9	22.6	4.5	18.3	16.4	9.7	17.0	5.0	12.0
SQT 06-10	10	6	17.5	12.5	23.1	24.8	4.3	20.2	16.4	10.9	16.8	5.0	16.0
SQT 08-10	10	8	17.5	14.5	24.8	24.8	4.3	20.2	18.3	10.9	18.8	6.5	16.0
SQT 08-12	12	8	20.5	14.5	25.8	28.1	4.3	22.9	18.3	12.4	18.8	7.0	23.0
SQT 10-12	12	10	20.5	17.5	27.4	28.1	4.3	22.9	20.2	12.4	21.9	8.0	25.0
SQT 10-16	16	10	25.5	17.5	30.1	30.8	5.3	24.1	19.7	15.9	22.8	8.0	41.0
SQT 12-16	16	12	25.5	20.5	32.6	32.3	5.3	24.1	22.9	15.9	25.8	10	45.0
SQT 06-04	4	6	10.5	12.5	20.3	18.8	4.3	14.8	16.4	7.4	16.8	3.4	6.7
SQT 08-06	6	8	12.5	14.8	22.7	20.3	4.3	16.4	18.1	8.4	19.1	5.0	9.5
SQT 10-08	8	10	14.5	17.5	25.4	22.8	4.3	18.4	20.3	9.4	21.4	6.8	13.3
SQT 12-10	10	12	17.5	20.5	29.2	25.3	4.3	20.3	23.1	10.9	24.8	8.0	20.1



SQM3

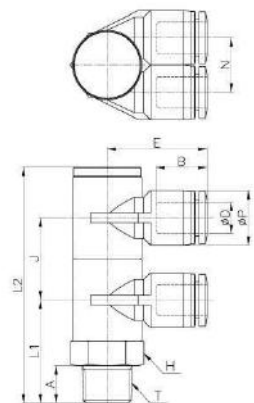


METRIC-BSPT(R)

Unit

MODEL	ØD1 (Tube Size)	ØD2 (Tube Size)	ØP1	ØP2	L1	L2	E	ØC	B1	B2	J	M1	M2	ORIFICE	Weight (g)
SQM 06-04-3	6	4	12.5	10.5	21.1	63.1	19.5	3.3	16.4	14.8	10.5	7.6	34	3	14
SQM 08-04-3	8	4	14.5	10.5	22.3	65.5	20.7	4.3	18.3	14.8	10.5	9.2	34.8	3	16
SQM 08-06-3	8	6	14.5	12.5	23.3	71.5	22.2	4.3	18.3	16.4	12.5	9.3	41.1	5	19
SQM 10-06-3	10	6	17.5	12.5	26.7	78.4	22.8	4.3	20.2	16.4	12.5	9.5	41.7	5	25
SQM 10-08-3	10	8	17.5	14.5	27.4	83.7	25.7	4.3	20.2	18.3	14.5	9.5	47	6.8	29

SQM4



METRIC-BSPT(R)

Unit

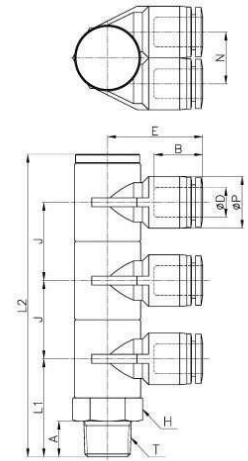
MODEL	ØD (Tube Size)	ØP	T	L1	L2	N	E	A	B	J	H (Hex.)	ORIFICE	Weight (g)
SQM 04-01S-4	4	10.5	R 1/8	22.5	51.8	10.5	21.4	8	14.8	17.9	14	3.2	40
SQM 04-02S-4			R 1/4	27.5	62.8		22.9	10		21.9	17	3.2	62
SQM 04-03S-4			R 3/8	29.0	64.8		26.1	11		21.9	21	3.2	95
SQM 04-04S-4			R 1/2	34.1	73.4		27.7	14		23.9	24	3.2	139
SQM 06-01S-4	6	12.5	R 1/8	22.5	51.8	12.5	22.9	8	16.4	17.9	14	4	43
SQM 06-02S-4			R 1/4	27.5	62.8		24.8	10		21.9	17	5	53
SQM 06-03S-4			R 3/8	29.0	64.8		26.6	11		21.9	21	5	97
SQM 06-04S-4			R 1/2	34.1	73.4		28.6	14		23.9	24	5	141
SQM 08-01S-4	8	14.5	R 1/8	22.5	51.8	14.5	24.8	8	18.3	17.9	14	5	48
SQM 08-02S-4			R 1/4	27.5	62.8		26.6	10		21.9	17	6	70
SQM 08-03S-4			R 3/8	29.0	64.8		28.2	11		21.9	21	7	103
SQM 08-04S-4			R 1/2	34.1	73.4		30.3	14		23.9	24	6	146
SQM 10-01S-4	10	17.5	R 1/8	22.5	51.8	17.5	28.2	10	20.2	21.9	17	8	78
SQM 10-02S-4			R 1/4	27.5	62.8		28.2	10		21.9	17	8	78
SQM 10-03S-4			R 3/8	29.0	64.8		30.2	11		21.9	21	6	110
SQM 10-04S-4			R 1/2	34.1	73.4		32.6	14		23.9	24	7	154
SQM 12-02S-4	12	20.5	R 1/4	27.5	62.8	20.5	31.1	10	22.9	21.9	17	8	91
SQM 12-03S-4			R 3/8	29.0	64.8		32.9	11		21.9	21	8	122
SQM 12-04S-4			R 1/2	34.1	73.4		35.2	14		23.9	24	8	167

SQM6



METRIC-BSPT(R)

MODEL	ØD (Tube Size)	ØP	T	L1	L2	N	E	A	B	J	H (Hex.)	ORIFICE	Unit	
													Weight (g)	
SQM 04-01S-6	4	10.5	R1/8	22.5	69.7	10.5	21.4	8	14.8	17.9	14	3.2	53	
SQM 04-02S-6			R1/4	27.5	84.7		22.9	10		21.9	17	3.2	80	
SQM 04-03S-6			R3/8	29.0	86.7		26.1	11		21.9	17	3.2	122	
SQM 04-04S-6			R1/2	34.1	97.3		27.7	14		23.9	24	3.2	187	
SQM 06-01S-6	6	12.5	R1/8	22.5	69.7	12.5	22.9	8	16.4	17.9	14	4	64	
SQM 06-02S-6			R1/4	27.5	84.7		24.8	10		21.9	17	5	86	
SQM 06-03S-6			R3/8	29.0	86.7		26.6	11		21.9	21	5	126	
SQM 06-04S-6			R1/2	34.1	97.3		28.6	14		23.9	24	5	181	
SQM 08-01S-6	8	14.5	R1/8	22.5	69.7	14.5	24.8	8	18.3	17.9	14	5	64	
SQM 08-02S-6			R1/4	27.5	84.7		26.6	10		21.9	17	6	92	
SQM 08-03S-6			R3/8	29.0	86.7		28.2	11		21.9	21	7	135	
SQM 08-04S-6			R1/2	34.1	97.3		30.3	14		23.9	24	6	200	
SQM 10-01S-6	10	17.5	R1/8	22.5	69.7	17.5	26.7	8	20.2	17.9	14	5	80	
SQM 10-02S-6			R1/4	27.5	84.7		28.2	10		21.9	17	8	106	
SQM 10-03S-6			R3/8	29.0	86.7		30.2	11		21.9	21	6	144	
SQM 10-04S-6			R1/2	34.1	97.3		32.6	14		23.9	24	7	213	
SQM 12-02S-6	12	20.5	R1/4	27.5	84.7	20.5	31.1	10	22.9	21.9	17	8	123	
SQM 12-03S-6			R3/8	29.0	86.7		32.9	11		21.9	21	8	165	
SQM 12-04S-6			R1/2	34.1	97.3		35.2	14		23.9	24	8	220	

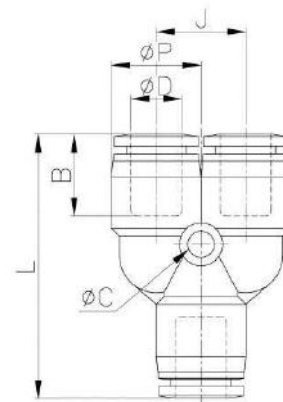


SQU-00



METRIC-BSPT(R)

MODEL	ØD (Tube Size)	ØP	L	J	ØC	B	Unit	
							Weight (g)	
SQU 04-00	4	10.5	35.9	10.5	3.3	16.0	7.0	
SQU 06-00	6	13.0	39.2	13.0	3.3	17.6	10.0	
SQU 08-00	8	14.6	43.2	14.6	4.3	18.6	14.0	
SQU 10-00	10	17.5	47.2	17.5	4.5	19.9	20.0	
SQU 12-00	12	21.0	54.1	21.0	4.5	22.8	31.0	
SQU 16-00	16	25.5	61.9	25.5	5.3	24.1	45.9	

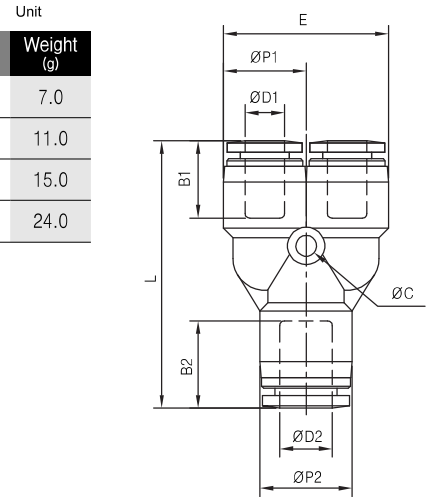


SQU-R



METRIC-BSPT(R)

MODEL	ØD1 (Tube Size)	ØD2 (Tube Size)	ØP1	ØP2	L	E	ØC	B1	B2	Weight (g)
SQU 04-06	4	6	10.5	13.0	37.8	21.0	3.3	16.1	17.6	7.0
SQU 06-08	6	8	13.0	14.6	42.2	26.0	3.3	17.6	19.0	11.0
SQU 08-10	8	10	14.6	17.5	44.8	29.2	4.3	19.0	19.7	15.0
SQU 10-12	10	12	17.5	21.0	50.6	35.0	4.5	19.8	22.7	24.0

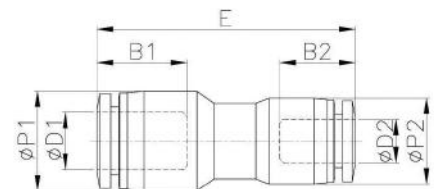


SQH-R



METRIC-BSPT(R)

MODEL	ØD1 (Tube Size)	ØD2 (Tube Size)	ØP1	ØP2	E	B1	B2	Weight (g)
SQH 04-06	6	4	12.5	10.5	35.0	16.4	14.8	6.0
SQH 06-08	8	6	14.5	12.5	37.6	18.3	16.4	8.0
SQH 08-10	10	8	17.5	14.5	40.0	20.2	18.3	10.0
SQH 10-12	12	10	20.5	17.5	43.9	22.9	20.2	14.0
SQH 12-16	16	12	25.5	20.5	43.9	24.1	22.9	25.0

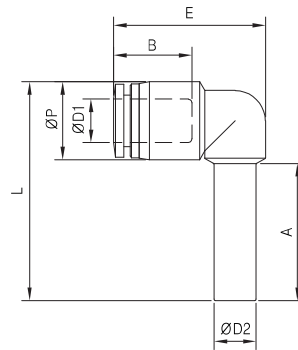


SQL-99

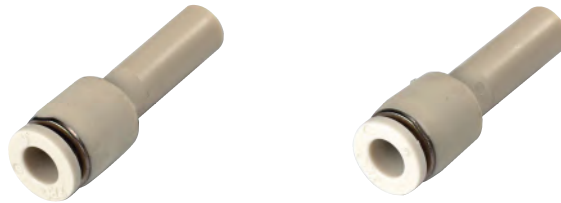


METRIC-BSPT(R)

MODEL	ØD1 (Tube Size)	ØD2 (Tube Size)	ØP	L	E	A	B	Unit Weight (g)
SQL04-99	4	4	10.5	33.6	22.6	22.0	14.9	4.0
SQL06-99	6	6	12.5	37.6	25.3	24.0	16.4	9.0
SQL08-99	8	8	14.8	41.5	28.8	26.0	18.7	8.0
SQL10-99	10	10	17.5	46.6	31.2	28.0	20.1	10.0
SQL12-99	12	12	20.5	51.7	36.0	30.0	22.8	17.0

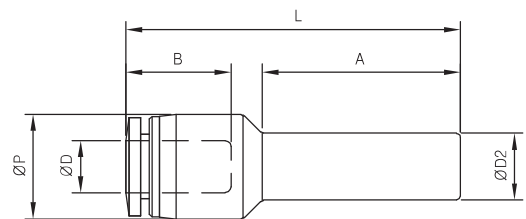


SQJ



METRIC-BSPT(R)

MODEL	ØD (Tube Size)	ØD2	ØP	L	A	B	Unit Weight (g)
SQJ 04-06	4	6	10.5	37.8	21.7	14.9	3.0
SQJ 04-08	4	8	10.5	39.8	24.7	14.9	4.0
SQJ 06-08	6	8	12.5	40.0	23.7	16.4	5.0
SQJ 06-10	6	10	12.5	44.0	28.7	16.4	6.0
SQJ 06-12	6	12	12.5	50.0	34.4	16.4	6.0
SQJ 08-10	8	10	14.8	46.8	27.6	18.7	7.0
SQJ 08-12	8	12	14.8	50.8	32.6	18.7	7.0
SQJ 10-12	10	12	17.5	50.8	31.2	20.1	8.0

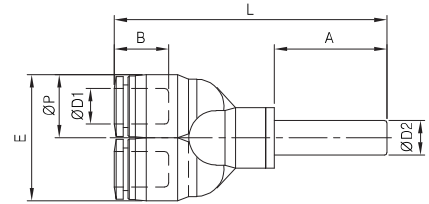


SQU-99



METRIC-BSPT(R)

MODEL	∅D (Tube Size)	∅D2	∅P	L	E	A	B	Unit Weight (g)
SQU 04-99	4	4	10.5	56.5	21.0	24.0	15.6	5.0
SQU 06-99	6	6	12.5	58.4	25.0	25.0	16.9	9.0
SQU 08-99	8	8	14.5	62.8	29.0	26.0	19.0	11.0
SQU 10-99	10	10	17.6	68.5	35.2	28.0	20.2	18.0
SQU 12-99	12	12	21.0	75.6	42.0	30.0	22.6	28.0

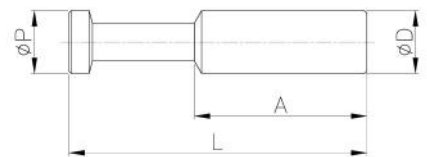


SQP



METRIC-BSPT(R)

b g OPZ	O	h	Z	J	Unit ()
ui h4B	M	M	96	7T	746
ui h4D	R	R	9M	86	746
ui h4F	T	T	9T	88	846
ui h64	76	76	M8	8Q	946
ui h68	78	78	MR	8T	M6
ui h6D	7R	7R	G6	96	T46

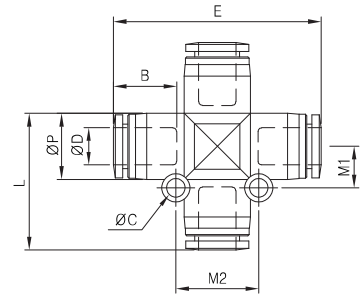


SQZ-00



METRIC-BSPT(R)

MODEL	ØD (Tube Size)	ØP	L	E	ØC	B	M1	M2	Unit Weight (g)
SQZ 04-00	4	10.5	23.2	35.9	3.3	14.9	6.4	12.7	9.0
SQZ 06-00	6	12.5	27.0	41.5	3.3	16.4	7.4	14.9	12.0
SQZ 08-00	8	14.5	30.0	45.6	4.2	18.7	9.1	18.2	18.0
SQZ 10-00	10	17.5	32.9	48.4	4.3	20.1	10.1	20.3	24.0
SQZ 12-00	12	20.5	37.9	55.3	4.3	22.8	11.8	23.7	40.0

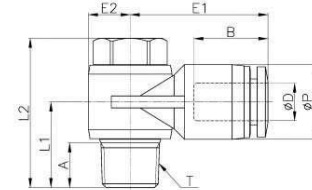
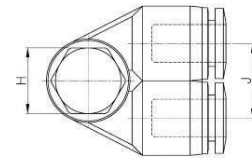


SQZ



METRIC-BSPT(R)

b gOPZ	(^O _x ^u)	h	x	Z6	Z8	U	P6
ui 4B1b u	M	76Ø	Q 64T	76Ø	7TØ	76Ø	7X4M
ui 4D146u	R	784Q	75T	7MØ	8QØ	784Q	894T
ui 4F148u	T	7MØ	75M	7TØ	8TØ	7MØ	8SØ
ui 64148u	76	7S-Q	75M	7XØ	8TØ	7S-Q	96X
ui 6414Au	76	7S-Q	95T	86R	98Ø	7S-Q	96X
ui 6814Au	78	86Q	95T	884	98Ø	86Q	9QØ
ui 6814Bu	78	86Q	75B	8QØ	9TØ	86Q	9RØ



b gOPZ	P8	J	L	(^S _S)	gt TOMP	()
ui 4B1b u	Q	9R	7MØ	T	8	76
ui 4D146u	S	S-Q	7RØ	77	94Q	86
ui 4F148u	X	76	7TØ	7Q	R-Q	96
ui 64148u	X	76	86Ø	7Q	Q7	9M
ui 6414Au	77Ø	77	86Ø	7X	SØ	QT
ui 6814Au	77Ø	77	884M	7X	RØ	R7
ui 6814Bu	7M	7M	884M	8M	RØ	TS