

Sandwich Regulator for Plug-in Valve (RS4000) Series

Spacer Type Pressure Reducing Valve

Directional Control Valve

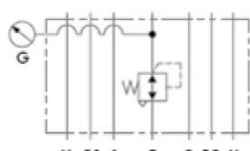
RS4U Series



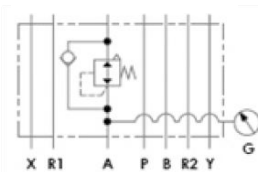
- High reliability
 - High durability
 - Prevents spool abrasion with wear-ring
 - Piston return type
- Large Capacity
 - Expanded effective area (2.5 times bigger than standard)
- Variability
 - Integrated exhaust type by default
 - Equipped with external pilot

Symbol

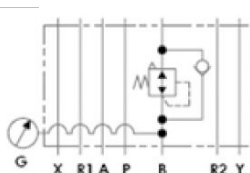
P Port Controlling Type



A Port Controlling Type



B Port Controlling Type



How to Order

RS4U — 10 — 2A6D2H2B — T — 02 — 04 — N

1
 10
 3
 T
 02
 04
 N

1 Series

RS4U : RS4000 Valve + Sandwich Regulator + Manifold Combination

2 Number of Stations

04 : 4 stations
 06 : 6 stations
 08 : 8 stations
 10 : 10 stations
 12 : 12 stations

3 Valve Arrangement Order

Q'ty	Symbol	Figure	Part No.	Mark
	S		RS4140-5	Single
6	D		RS4240-5	Double
2	H		RS4340-5	Closed Center
	J		RS4440-5	Exhaust Center
	I		RS4540-5	Pressure Center
2	B		RSM4-B	Blank Plate
	P		RS4R-P	P pressure reducing type
	A		RS4R-A	A pressure reducing type
	B		RS4R-B	B pressure reducing type

Note1) Sandwich Regulator is not included in stations.
 Note2) Put quantity and symbol in front column and enter blank plate at the end.

4 Connector Type

T : terminal block
 DV : D-Sub connector (vertical)
 DH : D-Sub connector (horizontal)
 FV : flat cable connector (vertical)
 FH : flat cable connector (horizontal)

5 A & B Port Size

Symbol	A & B Port	P, R, PE, X Port
02	Rc(PT) 1/4	P, R, : Rc(PT) 1/2
03	Rc(PT) 3/8	PE, X : Rc(PT) 1/4

Note) If in inch, "U" is added after numbers.

6 Terminal Box Port Size

Symbol	A & B Port
04	Rc(PT) 1/2
06	Rc(PT) 3/4

7 Terminal Box Port Sealing

Blank : port plug (set screw)
 N : rubber stopper
 Note) Only apply to terminal block

Specifications

Spacer Type Decompressing	RS4R		
Decompressing Port	A	B	P
Fluid	air		
Max. Operating Pressure (MPa)	0.7 (Electronic Valve)		
Proof Pressure (MPa)	1.0		
Allowable Pressure Range (MPa)	0.05 ~ 0.7		
Ambient & Fluid Temp. (°C)	-5 ~ 50(non-freezing)		
Exhaust Type	Relief type		
Weight (g)	325		

Note) Configure within the allowable pressure range of electronic valve.