

Series PR2

Regulator 1/8" and 1/4"

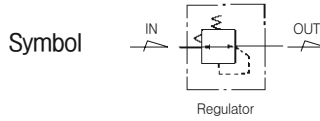


PAT

Standard Specifications

Fluid	Air	
Max. Operating Pressure (MPa)	1.0(140psi)	
Proof Pressure (MPa)	1.5(200psi)	
Set Pressure	Standard	0.05~1.0(7~140psi)
Range(MPa)	Madd to Order Specifications	0.05~0.2(7~30psi), 0.05~0.4(7~60psi)
Ambient and Fluid Temperature (°C)	-5~60(23~140°F)(Non-freezing)	
Flow Capacity ※ (N l /min)	1/8"	1,300(46scfm)
	1/4"	1,700(60scfm)
Construction	Relieving Style	
Port Size for Pressure Gauge (Rc (PT), NPT)	1/8"	
Weight (kg)	0.18(0.4lb)	

※ Test conditions : Supply pressure 0.7MPa(100psi), Set pressure 0.6MPa(90psi)



How to Order

PR 2 — * 02 B G — *

Series (Regulator Unit) — PR 2

Thread — *

Blank	Rc(PT)
N	NPT
G	G(PF)

Port Size — 02

01	1/8
02	1/4

Other Option — * B G

Blank	Set at 0 to 1.0 MPa, Standard	K	Built-in Check Valve	Note1)
2	Set at 0 to 0.2 MPa	R	Flow Direction : Right → Left	
4	Set at 0 to 0.4 MPa	T	Tamper Resistant Kit	Note1,2)
E	Non-Relieving type	XC16	Copper-free	

Note1) Refer to page 935 for Built-in Check Valve, Tamper Resistant Kit.
 * If ordering more than one option, indicate symbols numerically then alphabetically Ex)2EK
 * Over Max. pressure value can be set.

Pressure Gauge — *

Symbol	Description	Pressure Range
Blank	No-Gauge	
G	Integral Pressure Gauge	1.0MPa(140psi)
P	Pressure Gauge	1.0MPa(140psi)
P2	Pressure Gauge	0.2MPa(30psi)
P4	Pressure Gauge	0.4MPa(60psi)

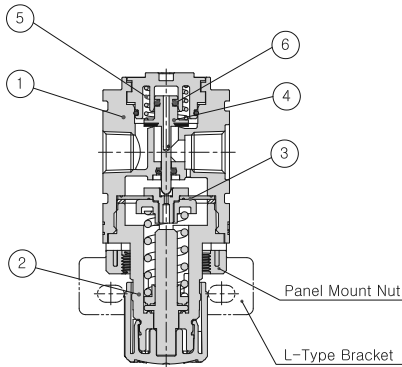
Bracket Option — *

Blank	None	
B	Bracket + Panel Nut	Note2)
B1	Panel Nut	

Note2) Separately packed, Not assembled

Series PR2

Construction



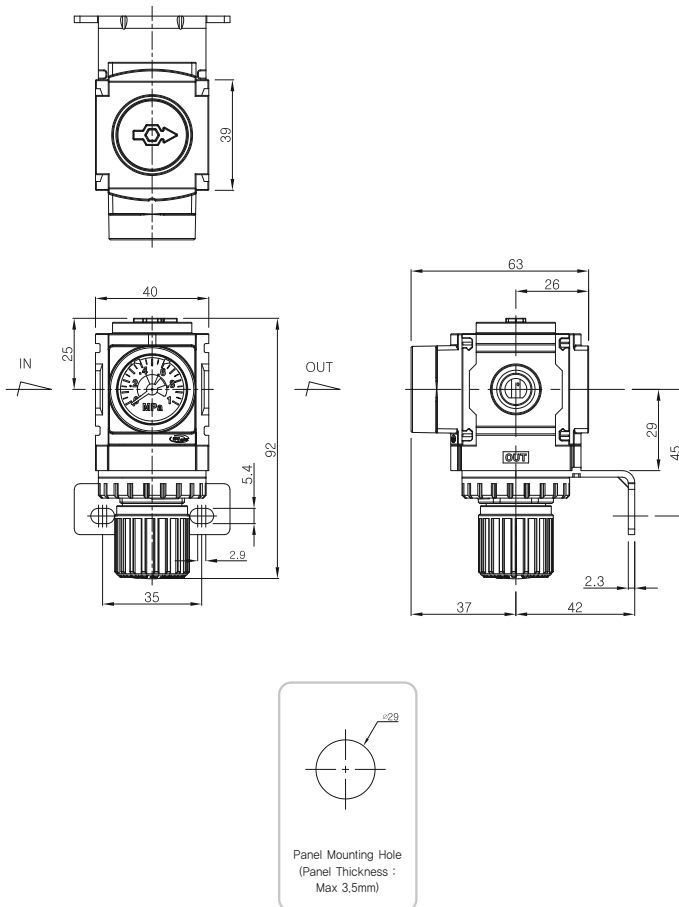
Main Parts/Parts List

No.	Description	Material	Remark
①	Body	Aluminum	
②	Bonnet	Nylon	

Replacement Parts/parts List

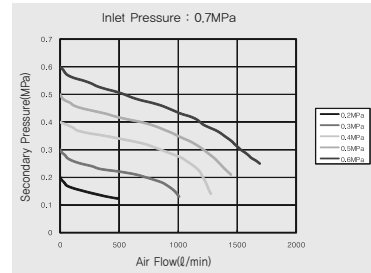
No.	Description	Material	Part No.
③	Diaphragm Ass'y	Nylon+NBR	PR2-11A001-01
④	Valve Ass'y	Brass+NBR	PR2-08-001-01
⑤	Valve Spring	Stainless Steel	PR2-14-001-01
⑥	Valve O-ring	NBR	P4-01

Dimensions

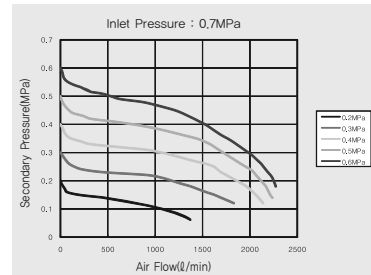


Flow Characteristics

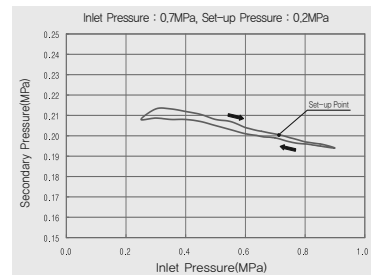
▶ 1/8" PR2



▶ 1/4" PR2



Pressure Characteristics



- PC2
- PF2
- PR2**
- PL2
- PP2
- PC3
- PF3
- PR3
- PL3
- PP3
- PC4
- PF4
- PR4
- PL4
- PP4
- PC5
- PF5
- PR5
- PL5
- PP5
- PFH(U)2~PFH(U)5
- PPH(U)3~PPH(U)4
- PLV
- PSH
- PCV
- MB

Series **PR3**

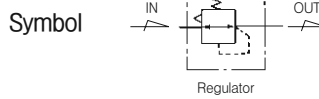
Regulator 1/4" and 3/8"



Standard Specifications

Fluid	Air	
Max. Operating Pressure (MPa)	1.0(140psi)	
Proof Pressure (MPa)	1.5(200psi)	
Set Pressure (MPa)	Standard	0.05~1.0(7~140psi)
	Made to Order Specifications	0.05-0.2(7-30psi), 0.05-0.4(7-60psi), 0.05-1.2(7-170psi)
Ambient and Fluid Temperature (°C)	-5~60(23~140°F) (Non-freezing)	
Flow Capacity * (N l/min)	1/4"	2,500(88scfm)
	3/8"	3,200(113scfm)
Construction	Relieving Style	
Port Size for Pressure Gauge (Rc (PT), NPT)	1/8"	
Weight (kg)	0.32(0.71lb)	

* Test conditions : Supply pressure 0.7MPa(100psi), pre-set pressure 0.6MPa(90psi)



How to Order

PR 3 — * 03 B G — *

Series (Regulator Unit) — PR 3

Thread — * 03

Blank	Rc(PT)
N	NPT
G	G(PF)

Port Size — 03

02	1/4
03	3/8

Other Option — *

Blank	Set at 0 to 1.0 MPa, Standard	K	Built-in Check Valve	Note1)
2	Set at 0 to 0.2 MPa	R	Flow Direction : Right → Left	
4	Set at 0 to 0.4 MPa	T	Tamper Resistant Kit	Note1,2)
12	Set at 0 to 1.2 MPa	XC16	Copper-free	
E	Non-Relieving Type			

Note1) Refer to page 935 for Built-in Check Valve, Tamper Resistant Kit.
 * If ordering more than one option, indicate symbols numerically then alphabetically Ex) 2EK
 * Over Max. pressure value can be set.

Pressure Gauge — *

Symbol	Description	Pressure Range
Blank	None	
G	Integral Pressure Gauge (W/Limit Indicator)	1.0MPa
P	Pressure Gauge	1.0MPa
P2	Pressure Gauge	0.2MPa
P4	Pressure Gauge	0.4MPa

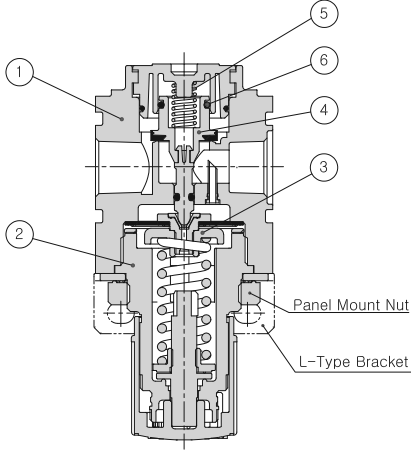
Bracket Option — *

Blank	None	
B	Bracket + Panel Nut	Note2)
B1	Panel Nut	

Note2) Separately packed, Not assembled.

Series PR3

Construction



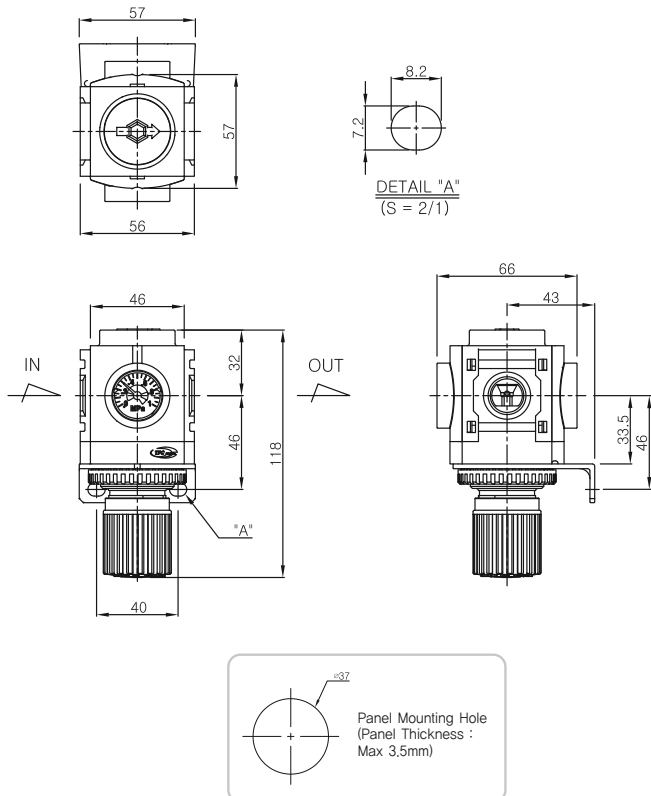
Main Parts/Parts List

No.	Description	Material	Remark
①	Body	Aluminum	
②	Bonnet	Nylon	

Replacement Parts/Parts List

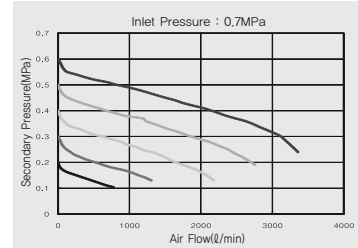
No.	Description	Material	Part No.
③	Diaphragm Ass'y	Nylon+NBR	PR3-11A001-01
④	Valve Ass'y	Nylon+NBR	PP4-08A001-01
⑤	Valve Spring	Stainless Steel	PR3-14-001-01
⑥	Valve O-ring	NBR	PR3-04-001-01

Dimensions

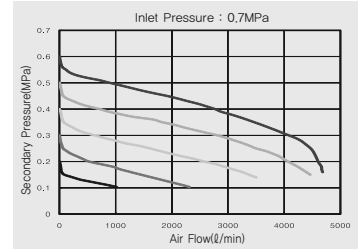


Flow Characteristics

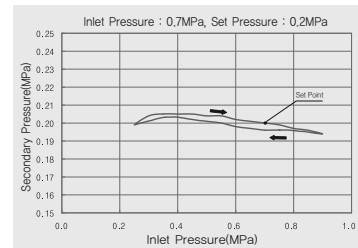
▶ 1/4" PR3



▶ 3/8" PR3



Pressure Characteristics



- PC2
- PF2
- PR2
- PL2
- PP2
- PC3
- PF3
- PR3**
- PL3
- PP3
- PC4
- PF4
- PR4
- PL4
- PP4
- PC5
- PF5
- PR5
- PL5
- PP5
- PFH(U)2~
PFH(U)5
- PPH(U)3~
PPH(U)4
- PLV
- PSH
- PCV
- MB

Series **PR4**

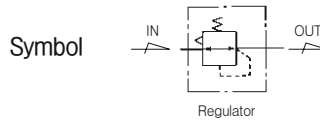
Regulator 3/8" and 1/2"



Standard Specifications

Fluid	Air	
Max. Operating Pressure (MPa)	1.0(140psi)	
Proof Pressure (MPa)	1.5(200psi)	
Set Pressure (MPa)	Standard	0.05~1.0(7~140psi)
	Made to Order Specifications	0.05~0.2(7~30psi), 0.05~0.4(7~60psi), 0.05~1.5(7~200psi)
Ambient and Fluid Temperature (°C)	-5~60(23~140°F) (Non-freezing)	
Flow Capacity ※ (N l /min)	3/8"	5,100(99scfm)
	1/2"	7,700(152scfm)
Construction	Relieving Style	
Port Size for Pressure Gauge (Rc (PT), NPT)	1/8"	
Weight (kg)	0.56(4.14lb)	

※ Test conditions : Supply pressure 0.7MPa(100psi), pre-set pressure 0.6MPa(90psi)



How to Order

PR 4 — * 04 B G — *

Series (Regulator Unit)

Thread

Blank	Rc(PT)
N	NPT
G	G(PF)

Port Size

03	3/8
04	1/2

Bracket Option

Blank	None	Note1)
B	Bracket + Panel Nut	
B1	Panel Nut	

Note1) Separately packed, Not assembled.

Other Option

Blank	Set at 0 to 1.0 MPa (Standard)	K	Built-in Check Valve	Note1)
2	Set at 0 to 0.2 MPa	R	Flow Direction : Right → Left	Note1,2)
4	Set at 0 to 0.4 MPa	T	Tamper Resistant Kit	
15	Set at 0 to 1.5 MPa	XC16	Copper-free	
E	Non-Relieving Type			

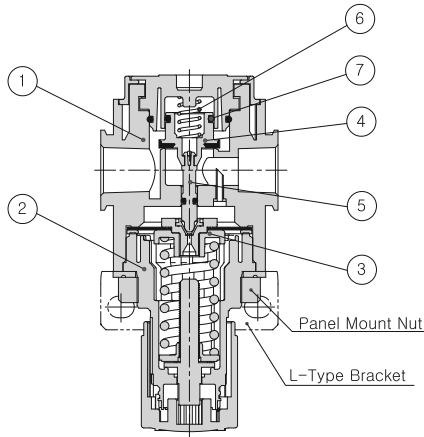
Note1) Refer to page 935 for Built-in Check Valve, Tamper Resistant Kit.
 * If ordering more than one option, indicate symbols numerically then alphabetically Ex) 2EK
 * Over Max. pressure value can be set.

Pressure Gauge

Symbol	Description	Pressure Range
Blank	None	
G	Integral Pressure Gauge (W/Limit Indicator)	1.0MPa
P	Pressure Gauge	1.0MPa
P2	Pressure Gauge	0.2MPa
P4	Pressure Gauge	0.4MPa

Series PR4

Construction



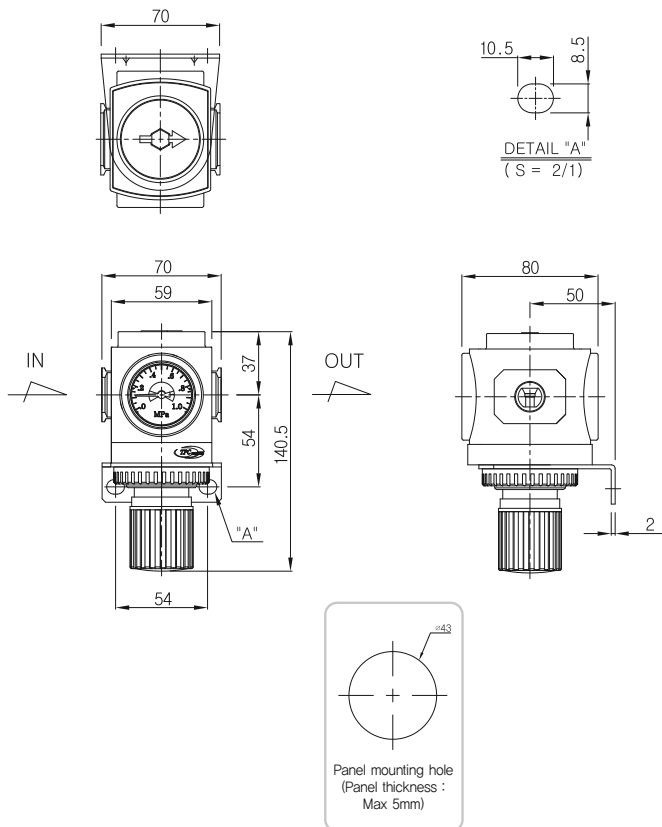
Main Parts/Parts List

No.	Description	Material	Remark
①	Body	Aluminum	
②	Bonnet	Nylon	

Replacement Parts/Parts List

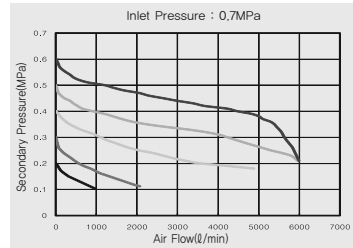
No.	Description	Material	Part No.
③	Diaphragm Ass'y	Nylon+NBR	PR4-11A001-01
④	Valve Ass'y	Nylon+NBR	PR4-08A001-01
⑤	Valve Stem	Bress	PR4-09-001-01
⑥	Valve Spring	Stainless Steel	PR4-14-001-01
⑦	Valve O-ring	NBR	P15-01

Dimensions

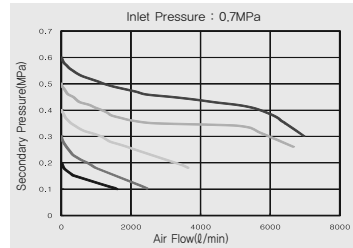


Flow Characteristics

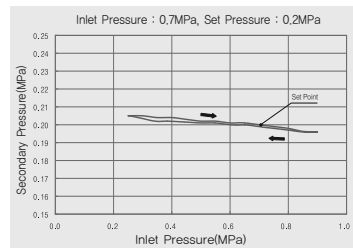
▶ 3/8" PR4



▶ 1/2" PR4



Pressure Characteristics



- PC2
- PF2
- PR2
- PL2
- PP2
- PC3
- PF3
- PR3
- PL3
- PP3
- PC4
- PF4
- PR4**
- PL4
- PP4
- PC5
- PF5
- PR5
- PL5
- PP5
- PFH(U)2~PFH(U)5
- PPH(U)3~PPH(U)4
- PLV
- PSH
- PCV
- MB

Series PR5

Regulator 3/4" and 1"

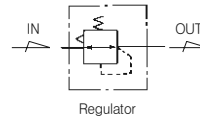


Standard Specifications

Fluid	Air	
Max. Operating Pressure (MPa)	1.0(140psi)	
Proof Pressure (MPa)	1.5(200psi)	
Set Pressure	Standard	0.05~1.0
Range(MPa)	Madd to Order Specifications	0.05~0.2(7~30psi), 0.05~0.4(7~60psi), 0.05~1.5(7~200psi)
Ambient and Fluid Temperature (°C)	-5~60(23~140°F) (Non-freezing)	
Flow Capacity ※	3/4"	8,200(290scfm)
(N l /min)	1"	9,600(339scfm)
Construction	Relieving Sytle	
Port Size for Pressure Gauge (Rc (PT), NPT)	1/8"	
Weight(kg)	1.46(2.43lb)	

※ Test conditions : Supply pressure 0.7MPa(100psi) , pre-set pressure 0.6MPa(90psi)

Symbol



How to Order

PR 5 — * 10 B G — *

Series
(Regulator Unit)

Thread

Blank	Rc(PT)
N	NPT
G	G(PF)

Port Size

06	3/4
10	1

Bracket Option

Blank	None
B	Bracket + Panel Nut
B1	Panel Nut

Note2) Separately packed, Not assembled.

Other Option

Blank	Set at 0 to 1.0 MPa, Standard	K	Built-in Check Valve	Note1)
2	Set at 0 to 0.2 MPa	R	Flow direction : Right-Left	Note1,2)
4	Set at 0 to 0.4 MPa	T	Tamper Resistant Kit	
15	Set at 0 to 1.5 MPa	XC16	Copper-free	
E	Non-Relieving Type			

Note1) Refer to page 935 for Built-in check valve, Tamper resistant kit, * If ordering more than one option, indicate symbols numerically then alphabetically Ex) 2EK

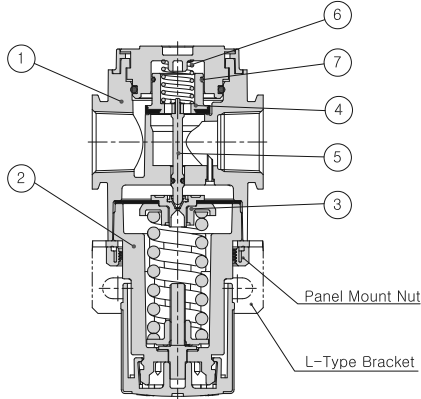
*Over Max. pressure value can be set.

Pressure Gauge

Symbol	Description	Pressure Range
Blank	None	
G	Integral Pressure Gauge (W/Limit Indicator)	1.0MPa
P	Pressure Gauge	1.0MPa
P2	Pressure Gauge	0.2MPa
P4	Pressure Gauge	0.4MPa

Series PR5

Construction



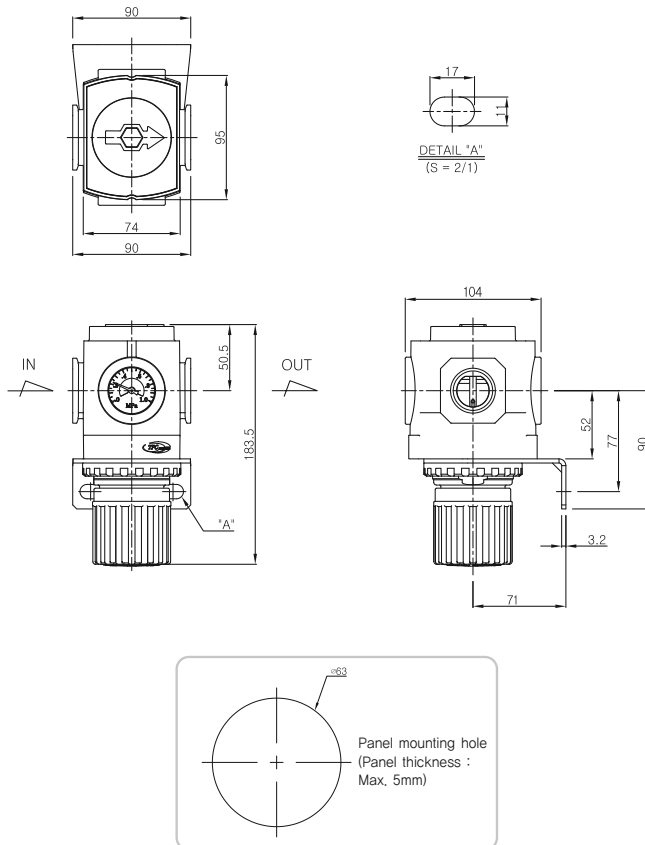
Main Parts/Parts List

NO.	Description	Material	Remark
①	Body	Aluminum	
②	Bonnet	Aluminum	

Replacement Parts/Parts List

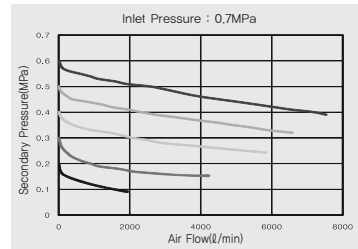
NO.	Description	Material	Part No.
③	Diaphragm Ass'y	Aluminum+NBR	PR5-11A001-01
④	Valve Ass'y	Nylon+NBR	PR5-08A001-01
⑤	Valve Stem	Brass	PR5-09-001-01
⑥	Valve Spring	Stainless Steel	PR5-14-001-01
⑦	Valve O-ring	NBR	S24-01

Dimensions

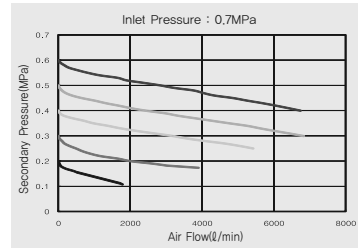


Flow Characteristics

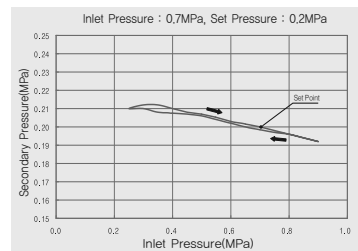
▶ 3/4" PR5



▶ 1" PR5



Pressure Characteristics



- PC2
- PF2
- PR2
- PL2
- PP2
- PC3
- PF3
- PR3
- PL3
- PP3
- PC4
- PF4
- PR4
- PL4
- PP4
- PC5
- PF5
- PR5**
- PL5
- PP5
- PFH(U)2~
PFH(U)5
- PPH(U)3~
PPH(U)4
- PLV
- PSH
- PCV
- MB