

Series **PL2**

Lubricator 1/8" and 1/4"

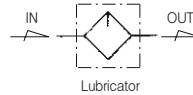


Standard Specifications

Fluid	Air	
Max. Operating Pressure (MPa)	1.0(140psi)	
Proof Pressure (MPa)	1.5(200psi)	
Min Operating Flow (N ℓ /min)	15(0.5scfm) (1/4")	
Bowl Capacity (cm ³)	18(0.61oz)	
Ambient and Fluid Temperature (°C)	-5~60(23~140°F) (Non-freezing)	
Flow Capacity * (N ℓ /min)	1/8"	1,000(32scfm)
	1/4"	1,700(57scfm)
Bowl Material	Polycarbonate	
Bowl Guard Material	Nylon	
Recommended Oil	ISO VG32(Turbine Oil 1 Class)	
Weight (kg)	0.14(0.31lb)	

* Test conditions : Supply pressure 0.6MPa(90psi) , Pressure drop 0.05MPa(7psi)

Symbol



How to Order

PL 2 — * 02 B — *

Series (Lubricator Unit) ————— PL 2

Thread ————— *

Blank	Rc(PT)
N	NPT
G	G(PF)

Port Size ————— 02

01	1/8
02	1/4

Other Option ————— *

R	Flow Direction : Right→Left
XC16	Copper-Free

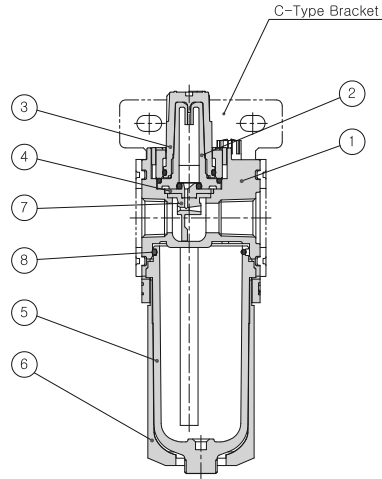
Bracket Option ————— *

Blank	None
B	Bracket

Note1) Separately packed, Not assembled.

Series PL2

Construction



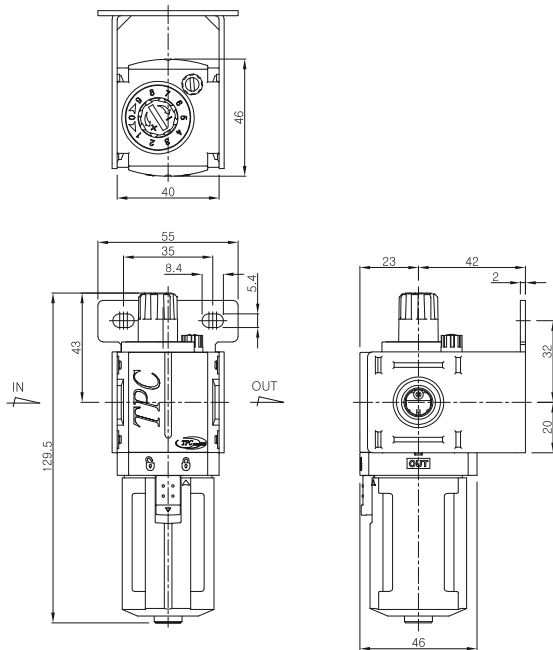
Main Parts/Part List

No.	Description	Material	Remark
①	Body	Aluminum	
②	Inner Sight Dome	Nylon(Clear)	
③	Outer Sight Dome	Nylon(Clear)	
④	Damper Plate	Acetal	
⑤	Bowl	Polycarbonate	
⑥	Bowl Guard	Nylon	

Replacement Parts/Parts List

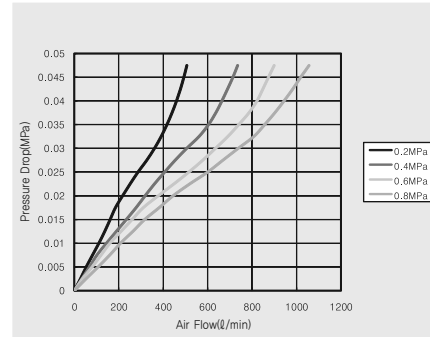
No.	Description	Material	Part No.
⑦	Damper	NBR	PL2-34-001-01
⑧	Bowl O-ring	NBR	DX2R-53-3000

Dimensions

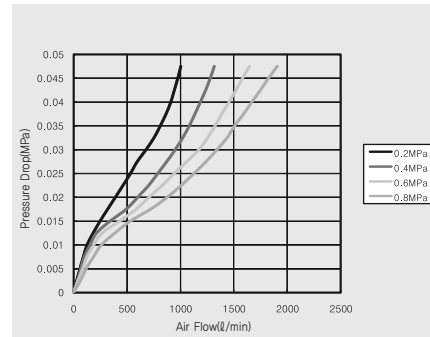


Flow Characteristics

▶ 1/8" PL2



▶ 1/4" PL2



PC2

PF2

PR2

PL2

PP2

PC3

PF3

PR3

PL3

PP3

PC4

PF4

PR4

PL4

PP4

PC5

PF5

PR5

PL5

PP5

PFH(U)2~
PFH(U)5

PPH(U)3~
PPH(U)4

PLV

PSH

PCV

MB

Series **PL3**

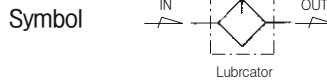
Lubricator 1/4" and 3/8"



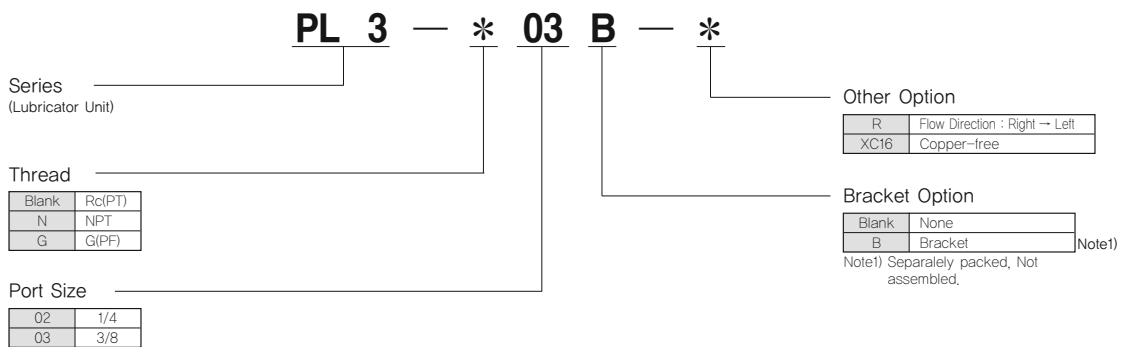
Standard Specifications

Fluid	Air	
Max. Operating Pressure (MPa)	1.0(140psi)	
Proof Pressure (MPa)	1.5(200psi)	
Min Operation Flow (N ℓ /min)	40(3/8 ")	
Bowl Capacity (cm ³)	56(1.89oz)	
Ambient and Fluid Temperature (°C)	-5~60(23~140°F)(Non-freezing)	
Flow Capacity ※ (N ℓ /min)	1/4 "	2,100(74scfm)
	3/8 "	3,100(109scfm)
Bowl Material	Polycarbonate	
Bowl Guard Material	Nylon	
Recommended Oil	ISO VG32(Turbine Oil 1 Class)	
Weight (kg)	0.26(0.57lb)	

※ Test conditions : Supply pressure 0.6MPa(100psi), Pressure drop 0.05MPa(90psi)

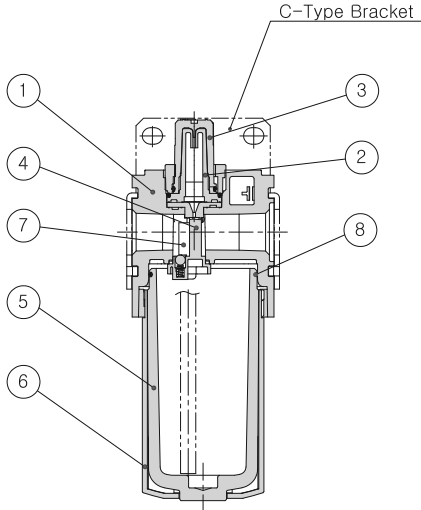


How to Order



Series PL3

Construction



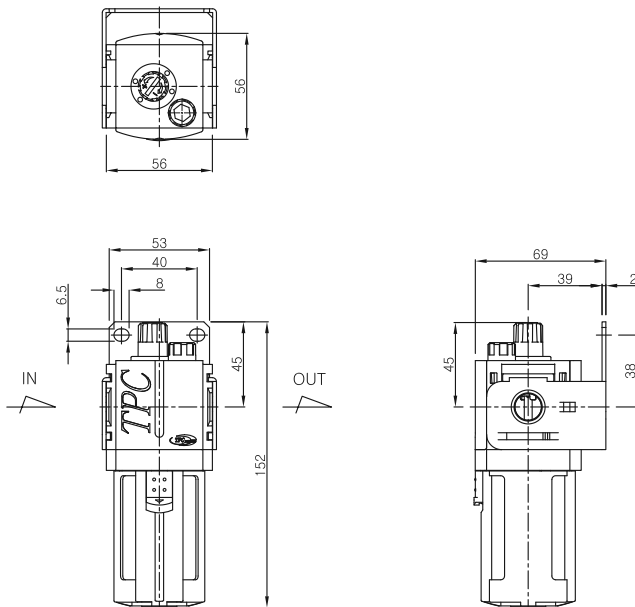
Main Parts/Parts List

No.	Description	Material	Remark
①	Body	Aluminum	
②	Inner Sight dome	Nylon(Transparent)	
③	Outer Sight dome	Nylon(Transparent)	
④	Damper Plate	Acetal	
⑤	Bowl	Polycarbonate	
⑥	Bowl Guard	Nylon	

Replacement Parts/Parts List

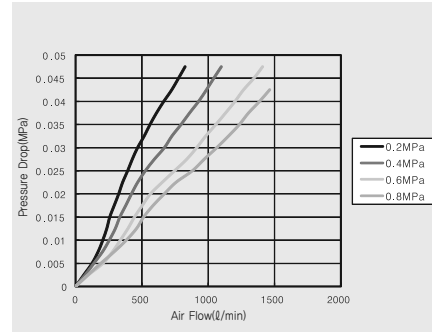
No.	Description	Material	Part No.
⑦	Damper	NBR	PL3-34-001-01
⑧	Bowl O-ring	NBR	PL3-04-001-01

Dimensions

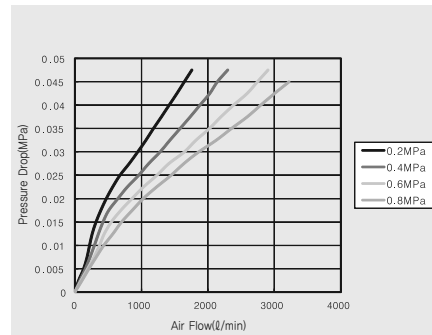


Flow Characteristics

▶ 1/4" PL3



▶ 3/8" PL3



- PC2
- PF2
- PR2
- PL2
- PP2
- PC3
- PF3
- PR3
- PL3**
- PP3
- PC4
- PF4
- PR4
- PL4
- PP4
- PC5
- PF5
- PR5
- PL5
- PP5
- PFH(U)2~PFH(U)5
- PPH(U)3~PPH(U)4
- PLV
- PSH
- PCV
- MB

Series **PL4**

Lubricator 3/8" and 1/2"

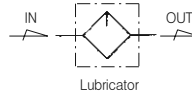


Standard Specifications

Fluid	Air	
Max. Operating Pressure (MPa)	1.0(140psi)	
Proof Pressure (MPa)	1.5(200psi)	
Min Operating Flow (N ℓ /min)	50(1.8scfm)(1/2")	
Bowl Capacity (cm ³)	127(4.29oz)	
Ambient and Fluid Temperature (°C)	-5~60(23~140°F)(Non-freezing)	
Flow Capacity * (N ℓ /min)	3/8"	2,400(85scfm)
	1/2"	4,500(159scfm)
Bowl Material	Poly carbonate	
Bowl Guard Material	Nylon	
Recommended Oil	ISO VG32(Turbine oil 1 class)	
Weight(kg)	0.54(1.19lb)	

* Test conditions : Supply pressure 0.6MPa(90psi) , Pressure drop 0.05MPa(7psi)

Symbol



How to Order

PL 4 — * 04 B — *

Series (Lubricator Unit) — PL 4

Thread — * 04

Blank	Rc(PT)
N	NPT
G	G(PF)

Port Size — 04

03	3/8
04	1/2

Other Option — *

R	Flow Direction : Right → Left
XC16	Copper-free

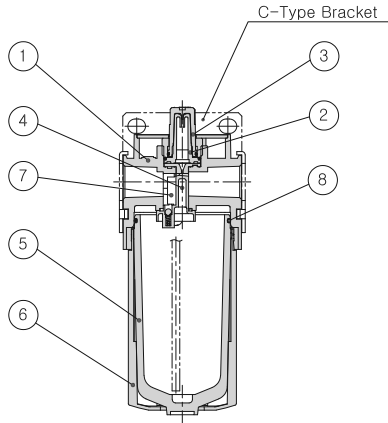
Bracket Option — *

Blank	None
B	Bracket

Note1) Separately packed, Not assembled.

Series PL4

Construction



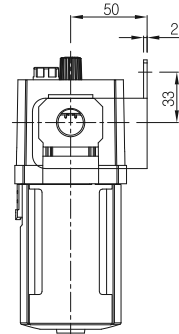
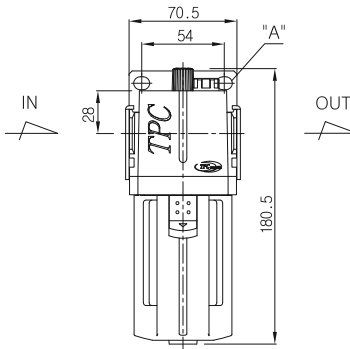
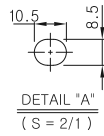
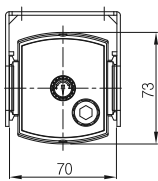
Main Parts/Parts List

No.	Description	Material	Remark
①	Body	Aluminum	
②	Inner Sight Dome	Nylon(Transparent)	
③	Outer Sight Dome	Nylon(Transparent)	
④	Damper Plate	Acetal	
⑤	Bowl	Polycarbonate	
⑥	Bowl Guard	Nylon	

Replacement Parts/Parts List

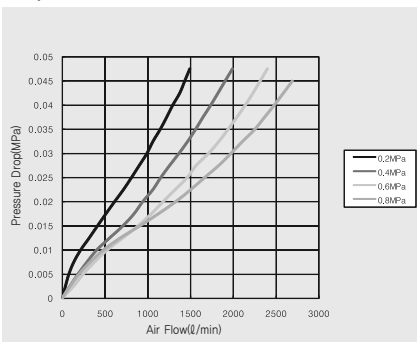
No.	Description	Material	Part No.
⑦	Damper	NBR	PL4000-14-6100-01
⑧	Bowl O-ring	NBR	TAF4000-08-6000

Dimensions

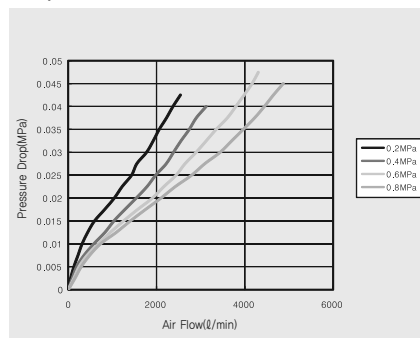


Flow Characteristics

▶ 3/8" PL4



▶ 1/2" PL4



- PC2
- PF2
- PR2
- PL2
- PP2
- PC3
- PF3
- PR3
- PL3
- PP3
- PC4
- PF4
- PR4
- PL4**
- PP4
- PC5
- PF5
- PR5
- PL5
- PP5
- PF(U)2~
PF(U)5
- PPH(U)3~
PPH(U)4
- PLV
- PSH
- PCV
- MB

Series **PL5**

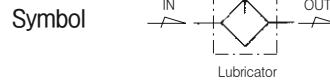
Lubricator 3/4" and 1"



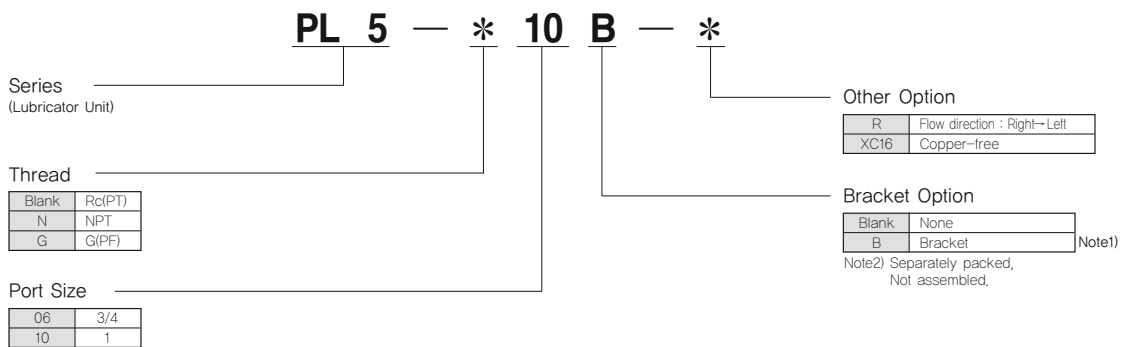
Standard Specifications

Fluid	Air	
Max. Operating Pressure (MPa)	1.0(140psi)	
Proof Pressure (MPa)	1.5(200psi)	
Min Operating Flow (N ℓ /min)	150(5.3scfm)(1 ~)	
Bowl Capacity (cm ³)	109(3.69oz)	
Ambient and Fluid Temperature (°C)	-5~60(23~140°F) (Non-freezing)	
Flow Capacity ※	3/4 ~	9,400(332scfm)
	(N ℓ /min)	1 ~
Bowl Material	Polycarbonate	
Bowl Guard Material	Nylon	
Recommended Oil	ISO VG32(Turbine Oil 1 Class)	
Weight(kg)	1.08(2.38lb)	

※ Test conditions : Supply pressure 0.6MPa(90psi), pressure drop 0.05MPa(7psi)

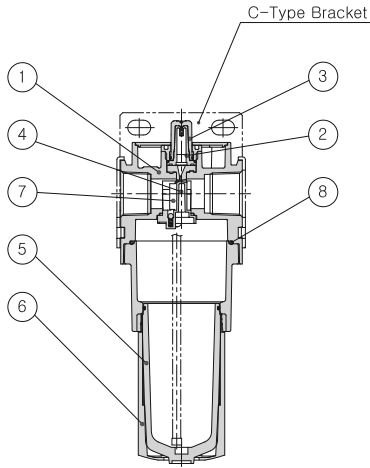


How to Order



Series PL5

Construction



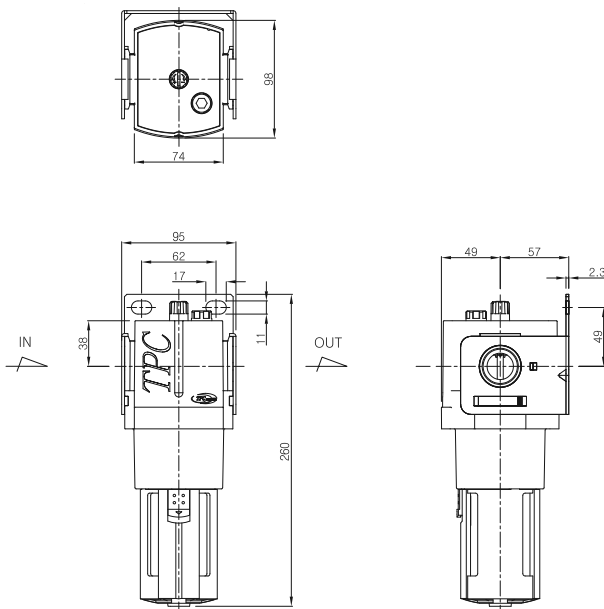
Main Parts/Parts List

NO.	Description	Material	Remark
①	Body	Aluminum	
②	Inner Sight dome	Nylon (Transparent)	
③	Outer Sight dome	Nylon (Transparent)	
④	Damper Plate	Acetal	
⑤	Bowl	Polycarbonate	
⑥	Bowl Guard	Nylon	

Replacement Parts/Parts List

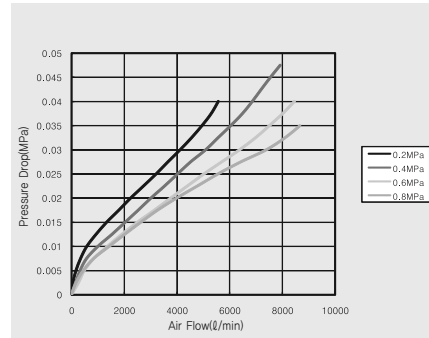
NO.	Description	Material	Part No.
⑦	Damper	NBR	PL5-34-001-01
⑧	Bowl O-ring	NBR	TAF4000-08-6000

Dimensions

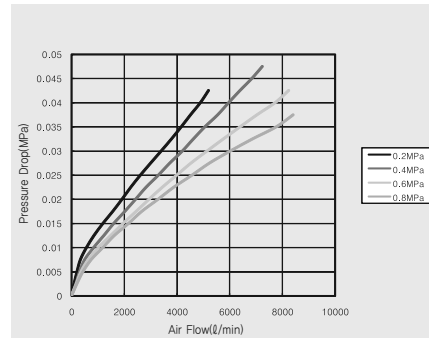


Flow Characteristics

▶ 3/4" PL5



▶ 1" PL5



- PC2
- PF2
- PR2
- PL2
- PP2
- PC3
- PF3
- PR3
- PL3
- PP3
- PC4
- PF4
- PR4
- PL4
- PP4
- PC5
- PF5
- PR5
- PL5**
- PP5
- PF(U)2~
PF(U)5
- PPH(U)3~
PPH(U)4
- PLV
- PSH
- PCV
- MB