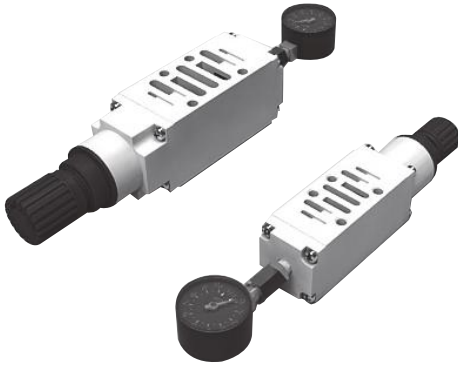


Series **DX1(2)R**

Sandwich Regulator (ISO#1, #2)



- DECOMPRESSION METHOD WITH SUPPLY OIL FOR P-PORT ADJUSTING TYPE
DECOMPRESSION METHOD WITH INDIVIDUAL OIL FOR A&B-PORT ADJUSTING TYPE
(POSSIBLE TO APPLY VALVE OVERALL SWITCHING WAY)
- LIGHT WEIGHT & COMPACT DESIGN
- HANDLE DIRECTION (REFER TO DIMENSION DRAWINGS FOR DETAILS)
P&B-PORT ADJUSTING TYPE INSTALLED IN RIGHT HAND SIDE AND A-PORT ADJUSTING TYPE INSTALLED IN LEFT HAND SIDE
- OPTIMIZED PRESSURE AND FLUX FEATURES WITH DIAPHRAGM METHOD PRESSURE ADJUSTMENT STRUCTURE
- POSSIBLE TO CHANGE A&B DECOMPRESSING STRUCTURE

- DW
- DR100
- DR200
- RS1000, 2000
- RS4000
- SI UNIT
- DV1000, DV3000, DV4000
- DS300
- DS3000
- DS5000
- DS2000
- DS6000
- DX1,DX2
- DX1(2)R**
- DH
- DP300, DP3000, DP5000
- DM
- DT220

How to Order

DX2R — P

1

2

1 Sandwich Regulator
DX1R : ISO#1 Size
DX2R : ISO#2 Size

2 Adjustment Pressure Port
P : P port adjusting type
A : A port adjusting type
B : B port adjusting type

Indication Symbol

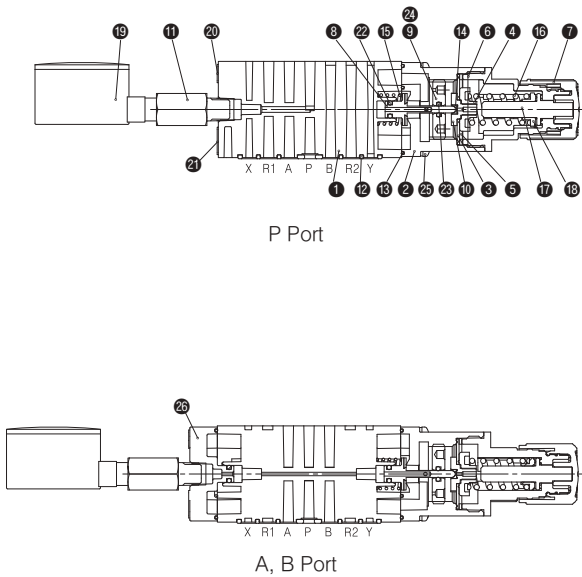
Type	Pressure Adjusting Port	Pressure Gauge Contact Diameter	Indication Symbol
DX1(2)R-P	P Port Adjusting Type	Rc (PT) 1/8	
DX1(2)R-A	A Port Adjusting Type		
DX1(2)R-B	B Port Adjusting Type		

Series DX1(2)R

DX1(2)R Series/Specification

Size Division		DX1R	DX2R
Guaranteed Pressure-Resistant		1.5MPa(15Kgf/cm ²)	
Max. Operating Pressure		1.0MPa(10Kgf/cm ²)	
Pressure Setting Range		0.05~1.0MPa(0.5~10Kgf/cm ²)	
Pressure Gauge Port Size		Rc(PT) 1/8	
Temperature of Surroundings and Fluid Applied		-5~60℃	
Pressure Relieving Structure		Relieving Type	
Air Supply Side Eff. Area(mm ²) (Cv)	P → A	Over 18mm ² (1.0)	Over 27mm ² (1.5)
	P → B		
Air Exhaust Side Eff. Area(mm ²) (Cv)	A → R1	Over 18mm ² (1.0)	Over 27mm ² (1.5)
	B → R2		

Structure Map/Component List

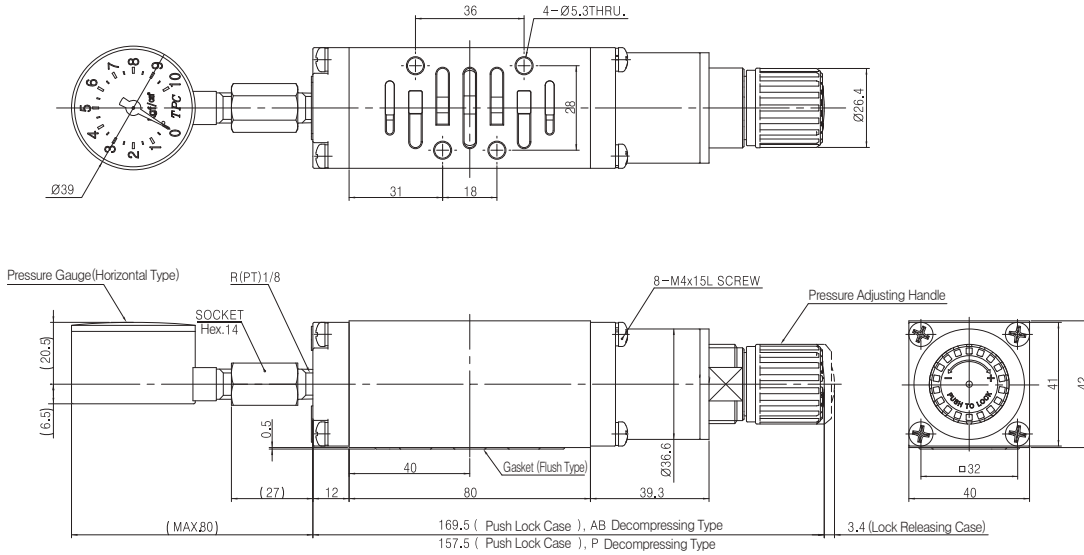


Major Components

NO	Item Number	Material	Remark
1	Body(P Decompressing type)	Aluminum Die Casting	
2	Chamber	Aluminum Die Casting	
3	Diaphragm	NBR+Resin	
4	Diaphragm Shell	Resin	
5	Diaphragm Ring	Resin	
6	Bonnet	Resin	
7	Handle	Resin	
8	R-Valve Ass'y		
9	Chamber Plate	Aluminum	
10	Relief Valve	Resin	
11	Nipple	Steel	
12	Body Gasket	NBR	
13	Chamber Gasket	NBR	
14	Relief Valve Gasket	NBR	
15	R-Valve Spring	Spring Steel	
16	Adjusting Spring	Hard Steel Wire	
17	Adjusting Bolt	Steel	
18	Adjusting Nut	Steel	
19	Pressure Gauge		
20	Name Plate	Resin	
21	Indication Symbol Plate	Resin	
22	R-Valve O-Ring	NBR	
23	Stem O-Ring	NBR	
24	Spring Pin	Spring Steel	
25	Chamber Screw	Stainless Steel	
26	End Cover	Aluminum Die Casting	For A&B port Decompressing Type

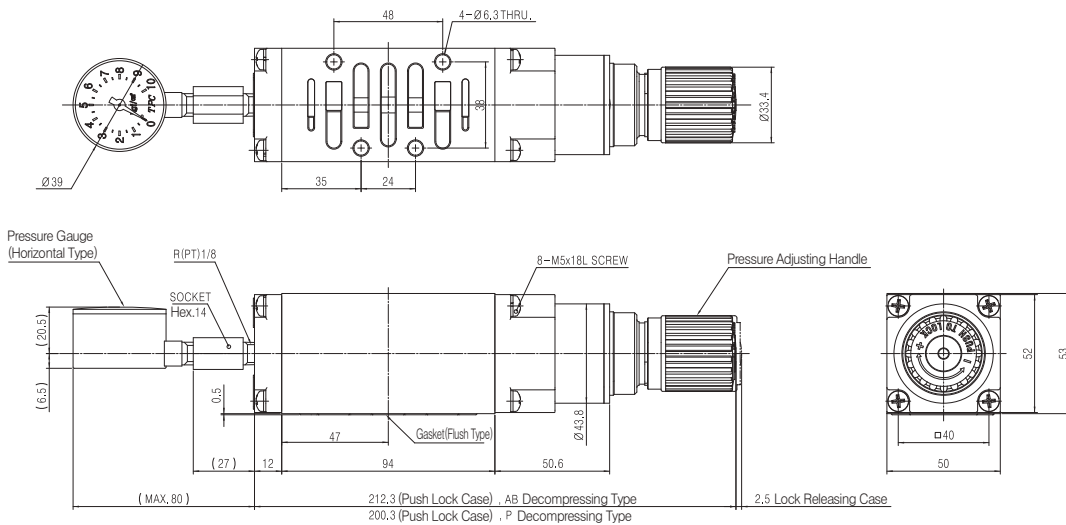
Series DX1(2)R

DX1R Sandwich Regulator/External Dimension Drawing



Note) In case of A-port decompressing type, pressure adjusting handle is assembled at opposite side (pressure gauge location)

DX2R Sandwich Regulator/External Dimension Drawing



Note) In case of A-port decompressing type, pressure adjusting handle is assembled at opposite side (pressure gauge location)

DW

DR100

DR200

RS1000, 2000

RS4000

SI UNIT

DV1000 DV3000 DV4000

DS300

DS3000

DS5000

DS2000

DS6000

DX1,DX2

DX1(2)R

DH

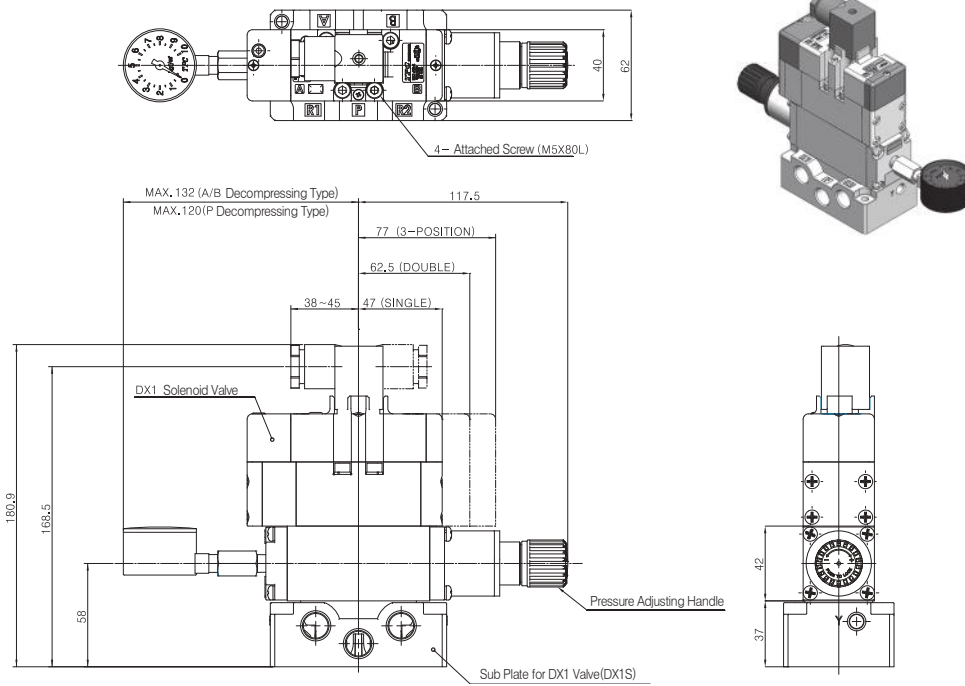
DP300 DP3000 DP5000

DM

DT220

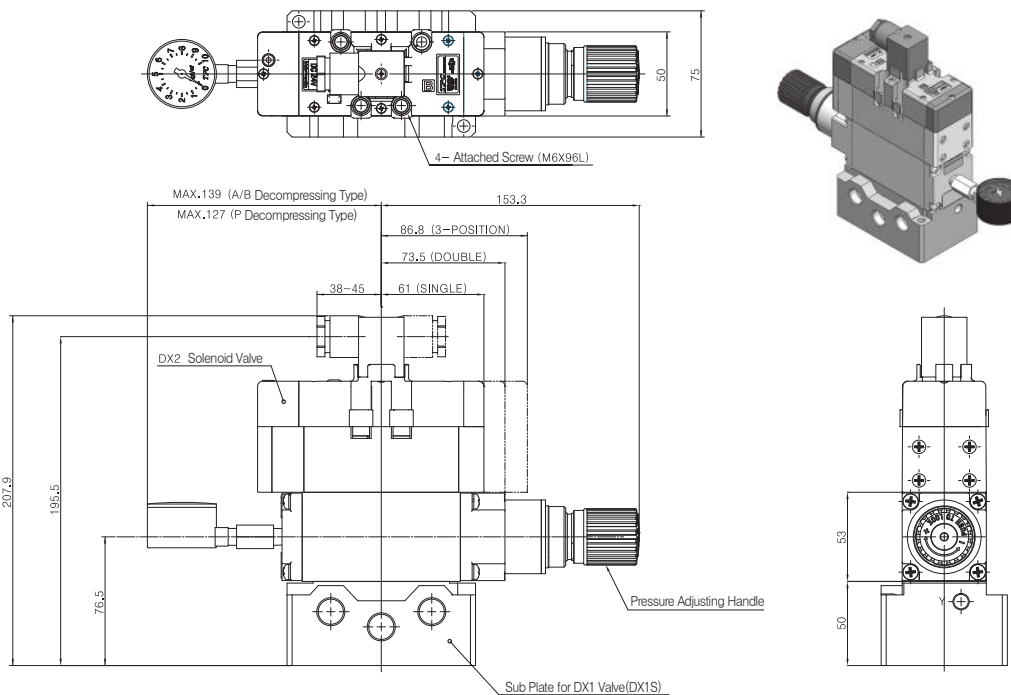
Series DX1(2)R

DX1 Solenoid Valve + DX1R Sandwich Regulator External Dimension Drawing



Note) In case of A-port decompressing type, pressure adjusting handle is assembled at opposite side (pressure gauge location)

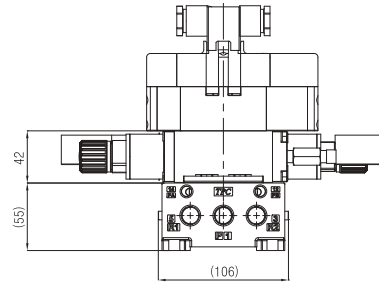
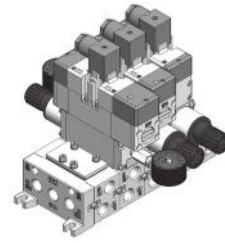
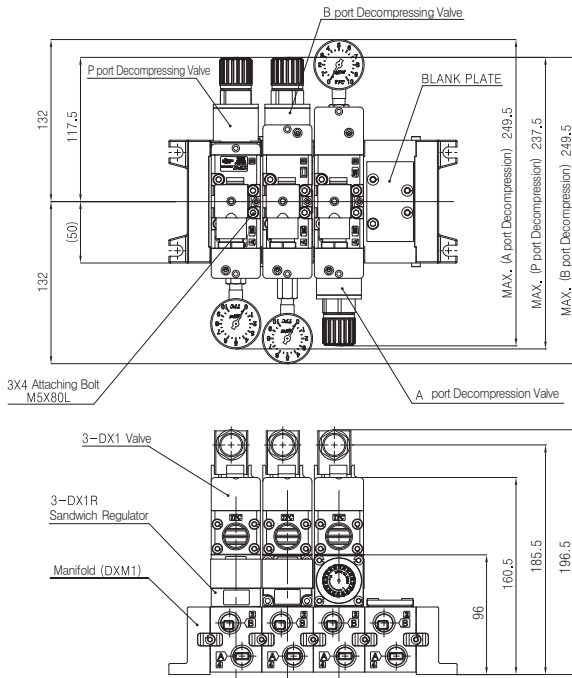
DX2 Solenoid Valve + DX2R Sandwich Regulator External Dimension Drawing



Note) In case of A-port decompressing type, pressure adjusting handle is assembled at opposite side (pressure gauge location)

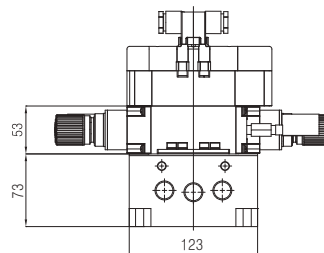
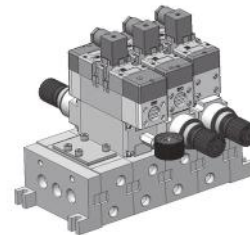
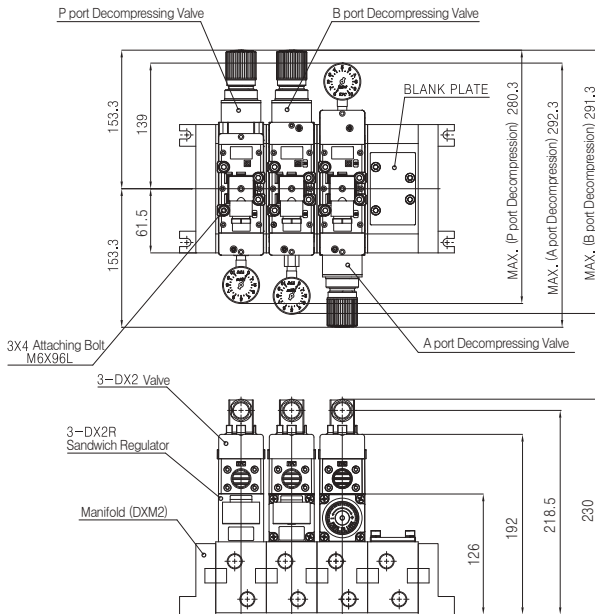
Series DX1(2)R

DX1 Valve + DX1R Sandwich Regulator + Manifold



Note) Refer to DX1 valve catalogue for dimensions not indicated above.

DX2 Valve + DX2R Sandwich Regulator + Manifold



Note) Refer to DX2 valve catalogue for dimensions not indicated above.

DW
DR100
DR200
RS1000, 2000
RS4000
SI UNIT
DV1000 DV3000 DV4000
DS300
DS3000
DS5000
DS2000
DS6000
DX1,DX2
DX1(2)R
DH
DP300 DP3000 DP5000
DM
DT220