

# DH Series

Hand Valve

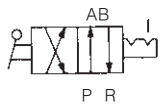
Directional Control Valve

DH Series

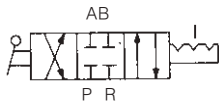


- Porting of Rc(PT) 1/4, 3/8 and 1/2
- Improved abrasion resistance
- Aluminum die casting design for heavy applications
- Detented center position

< Symbol >

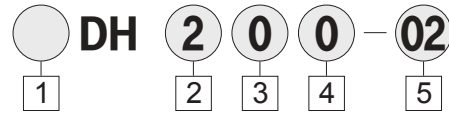


2 position



3 position

## How to Order



### 1 Series

Blank : Metric(PT)  
U : NPT

### 2 Body Size

2 : Cv 0.4(1/4" NPT(PT) Only)  
3 : Cv 1.1(3/8" NPT(PT) Only)  
4 : Cv 3.1(1/2" NPT(PT) Only)

### 3 Piping direction and mounting

0 : Side piping / Body mounting  
1 : Side piping / Panel mounting  
2 : Bottom piping / Body mounting  
3 : Bottom piping / Panel mounting

### 4 Position Symbol

0 : 3 Position Closed Center  
2 : 2 Position

### 5 Port Size

02 : 1/4  
03 : 3/8  
04 : 1/2

## Standard Specifications

Fluid	Air
Guaranteed Pressure	15kgf/cm <sup>2</sup>
Max. Operating Pressure	9.9kgf/cm <sup>2</sup>
Ambient and Operating Fluid Temperature	5~60°C (40~140°F)
Operating Angle	90°

## Model

Series	Port Size		Number of Positions	Effective Orifice mm <sup>2</sup> (Cv factor)	Weight (kgf)	Piping
	DH	UDH				
DH200	Rc(PT)1/4	NPT1/4	3(Closed Center)	7.5(0.4)	0.55	
DH300	Rc(PT)3/8	NPT3/8	3(Closed Center)	20(1.1)	0.9	
DH400	Rc(PT)1/2	NPT1/2	3(Closed Center)	55(3.1)	1.6	
DH202	Rc(PT)1/4	NPT1/4	2Position	7.5(0.4)	0.55	
DH302	Rc(PT)3/8	NPT3/8	2Position	20(1.1)	0.9	
DH402	Rc(PT)1/2	NPT1/2	2Position	55(3.1)	1.6	