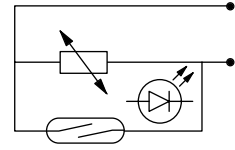


CNOMO Cylinder Sensor & Seal Kits

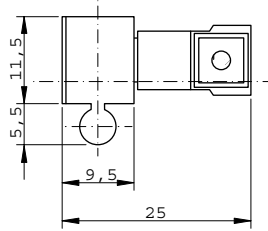
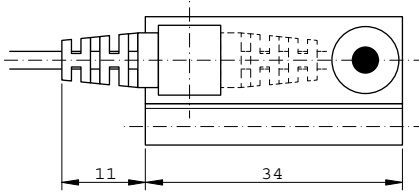
REED Type Sensor

Position Transmitter REED (2 wires)

Switching output:	N.O.
Switching capacity:	Max. 10 VA
Switching voltage:	3-230 V AC/DC
Switching current:	Max. 500 mA
Switching time:	0.5 ms
Service life:	107 operations, depending on the load
Housing material:	Plastic
Protection class:	IP67
Temperature range:	-20°C to +85°C
Status indicator:	LED



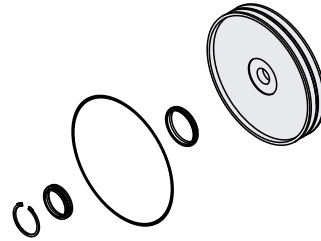
Dimensional drawings



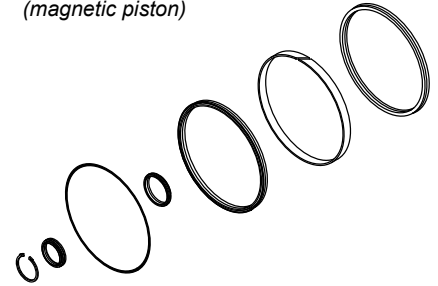
Code	Description
33.18.115	with cable L = 3000 mm

Order fastening clamps separately

Seal Kit for A Versions (non-magnetic piston)



Seal Kit for C Versions (magnetic piston)



Fastening Clamps

Ø	Code
32	33.009.08
40	
50	
63	
80	33.009.09
100	
125	
160	
200	

Ø	Code
32	SG.032A.DOM
40	SG.040A.DOM
50	SG.050A.DOM
63	SG.063A.DOM
80	SG.080A.DOM
100	SG.100A.DOM
125	SG.125A.DOM
160	SG.160A.DOM
200	SG.200A.DOM
250	SG.250A.DOM
320	SG.320A.DOM

Ø	Code
32	SG.032C.DOM
40	SG.040C.DOM
50	SG.050C.DOM
63	SG.063C.DOM
80	SG.080C.DOM
100	SG.100C.DOM
125	SG.125C.DOM
160	SG.160C.DOM
200	SG.200C.DOM
250	SG.250C.DOM
320	SG.320C.DOM

CNOMO Pneumatic Cylinder

Double Acting Ø 32mm - 100mm

Technical information

Operating pressure:	Max. 10 bar
Temperature range:	-10°C...+80°C (Dry air for below 0°C)
Housing/end caps:	Aluminium
Rod:	C45 chromium plated steel (Optional stainless steel)
Seals:	NBR (Optional Viton -10°C...+150°C)
Lubricant:	Not required
Operating medium:	5 micron filtered, lubricated or non-lubricated compressed air.



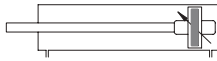
Other information:

Sensors & seal kits are available for this product, see data sheet M8200.
Mountings are available, see data sheets M0024/M2200/M2201.

Ø	A	B	C	D	ØE	F	G	H	I	ØJ	K	L	M	N	O	P	Q	ØR	S
32	46	25	15	5	25	33	6	M6	15.5	12	10	10	M10x1.5	20	80	105	G1/8	13	59
40	52	29	15	5	32	40	6	M6	15.5	18	19	15	M16x1.5	36	110	144	G1/4	18	80
50	66	29	15	5	32	49	14	M8	20.5	18	19	15	M16x1.5	36	110	144	G1/4	18	75
63	75	34	20	5	45	59	14	M8	20.5	22	19	19	M20x1.5	46	125	164	G3/8	22	80
80	95	41	20	5	45	75	17	M10	23.5	22	19	19	M20x1.5	46	125	164	G3/8	22	68
100	115	44	20	5	55	90	17	M10	23.5	30	27	27	M27x2	63	145	192	G1/2	27	88

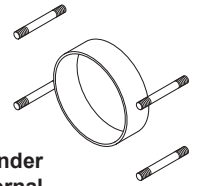
Dimensional drawings & ordering information

To order:	C.032.XXXX.DOM	32mm bore + stroke
	C.040.XXXX.DOM	40mm bore + stroke
	C.050.XXXX.DOM	50mm bore + stroke
	C.063.XXXX.DOM	63mm bore + stroke
	C.080.XXXX.DOM	80mm bore + stroke
	C.100.XXXX.DOM	100mm bore + stroke



Length of cushioning:

Ø 32	28mm
Ø 40	28mm
Ø 50	32mm
Ø 63	32mm
Ø 80	40mm
Ø 100	40mm



This Cylinder has an external tie-rod tube profile.

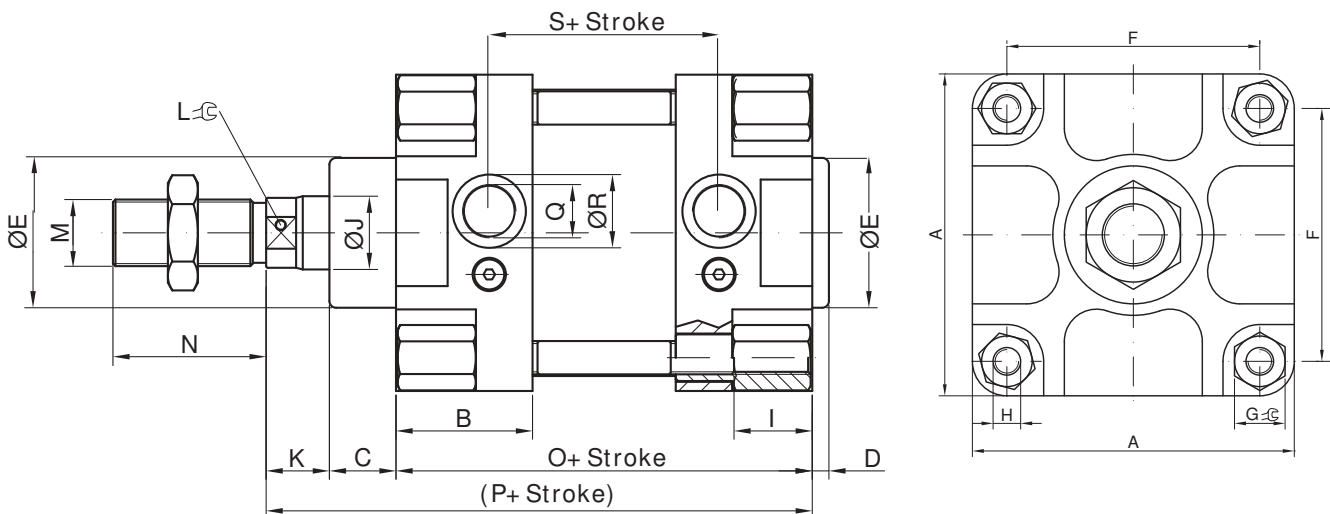
Stainless steel piston rod is also available for example: C.XXX.XXXX.DOM.4

Viton seals are also available for example: C.XXX.XXXX.DOM.8

A maximum temperature limitation of 100 C for the magnet to be effective when sensors are being used.

Non-magnetic versions are also available for example: A.XXX.XXXX.DOM

A special code will be generated by our factory should your requirement be for both Viton seals and stainless steel piston rod in the one assembly.



CNOMO Pneumatic Cylinder

Double Acting Ø 125mm - 320mm

Technical information

Operating pressure:	Max. 10 bar
Temperature range:	-10°C...+80°C (Dry air for below 0°C)
Housing/end caps:	Aluminium
Rod:	C45 chromium plated steel (Optional stainless steel)
Seals:	NBR (Optional Viton -10°C...+150°C)
Lubricant:	Not required
Operating medium:	5 micron filtered, lubricated or non-lubricated compressed air.



The picture above is an indication of design only.
See dimensional drawings.

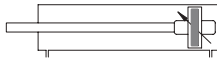
Other information:

Sensors & seal kits are available for this product, see data sheet M8200.
 Mountings are available for Ø 125 - 200mm only, see data sheets M0024/M4200/M4201.

Ø	A	B	C	D	ØE	F	G	H	ØJ	K	L	M	N	O	P	Q	ØR	S	I
125	140	48.5	20	5	55	110	22	M12	30	27	27	M27x2	63	145	192	G1/2	27	85	34
160	180	60	35	5	65	140	27	M16	40	15	36	M36x2	85	180	230	G3/4	35	102	42
200	220	59	35	5	65	175	27	M16	40	15	36	M36x2	85	180	230	G3/4	35	104	42
250	280	60	50	5	90	220	38	M20	50	30	41	M36x2	85	230	310	G3/4	35	149	50
320	340	60	82	5	110	270	46	M24	63	23	55	M36x2	90	230	335	G1	50	170	60

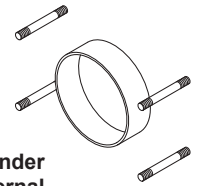
Dimensional drawings & ordering information

To order:	C.125.XXXX.DOM	125mm bore + stroke
	C.160.XXXX.DOM	160mm bore + stroke
	C.200.XXXX.DOM	200mm bore + stroke
	C.250.XXXX.DOM	250mm bore + stroke
	C.320.XXXX.DOM	320mm bore + stroke



Length of cushioning:

Ø 125	35mm
Ø 160	45mm
Ø 200	45mm
Ø 250	50mm
Ø 320	50mm



This Cylinder has an external tie-rod tube profile.

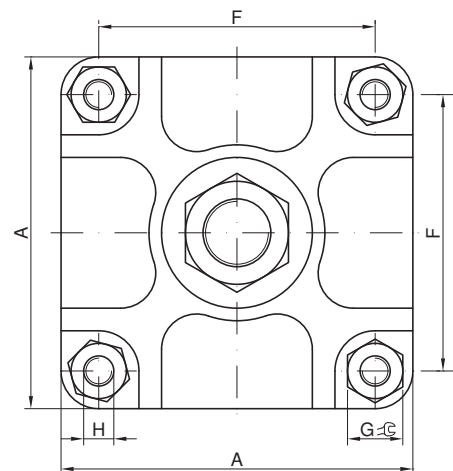
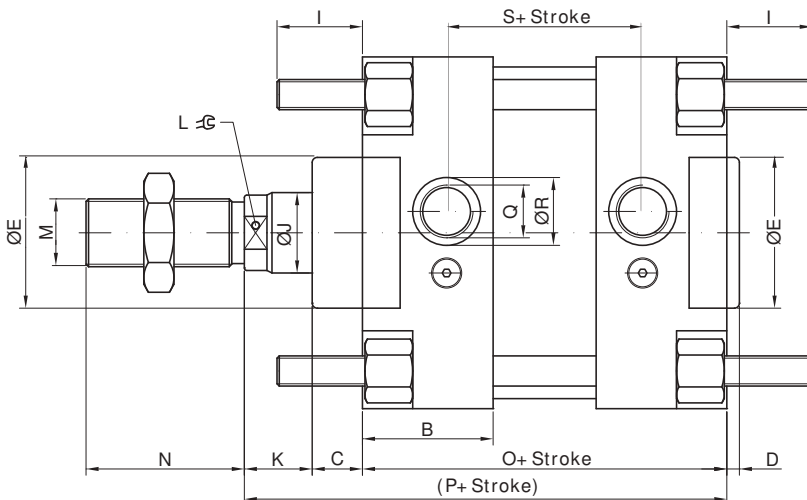
Stainless steel piston rod is also available for example: C.XXX.XXXX.DOM.4

Viton** seals are also available for example: C.XXX.XXXX.DOM.8

** Ø 125/160/200mm only, a maximum temperature limitation of 100 C for the magnet to be effective when sensors are being used.

Non-magnetic versions are also available for example: A.XXX.XXXX.DOM

A special code will be generated by our factory should your requirement be for both Viton seals and stainless piston rod in the one assembly.



CNOMO Pneumatic Cylinder

Double Acting Tandem Ø 32mm - 100mm

Technical information

Operating pressure:	Max. 10 bar
Temperature range:	-10°C...+80°C (Dry air for below 0°C)
Housing/end caps:	Aluminium
Rod:	C45 chromium plated steel (Optional stainless steel)
Seals:	NBR (Optional Viton -10°C...+150°C)
Lubricant:	Not required
Operating medium:	5 micron filtered, lubricated or non-lubricated compressed air.



The picture above is an indication of design only.
See dimensional drawings.

Other information:

Sensors & seal kits are available for this product, see data sheet M8200.
 Mountings are available, see data sheets M0024/M2200/M2201.

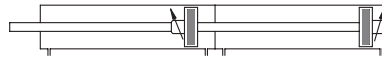
Ø	A	B	C	D	ØE	F	G	H		ØJ	K	L	M	N	O	P	Q	ØR	S
32	46	25	15	5	25	33	6	M6	-	12	10	10	M10x1.5	20	138	163	G 1/8	13	15.5
40	52	29	15	5	32	40	6	M6	-	18	19	15	M16x1.5	36	200	234	G1/4	18	15.5
50	66	29	15	5	32	49	14	M8	-	18	19	15	M16x1.5	36	200	234	G1/4	18	20.5
63	75	34	20	5	45	59	14	M8	-	22	19	19	M20x1.5	46	228	267	G3/8	22	20.5
80	95	41	20	5	45	75	17	M10	-	22	19	19	M20x1.5	46	214	253	G3/8	22	23.5
100	115	44	20	5	55	90	17	M10	-	30	27	27	M27x2	63	258	305	G1/2	27	23.5

Dimensional drawings & ordering information

Length of cushioning:

Ø32	28mm
Ø40	28mm
Ø50	32mm
Ø63	32mm
Ø80	40mm
Ø100	40mm

To order:	C.032.XXXX.DOM.2	32mm bore + stroke
	C.040.XXXX.DOM.2	40mm bore + stroke
	C.050.XXXX.DOM.2	50mm bore + stroke
	C.063.XXXX.DOM.2	63mm bore + stroke
	C.080.XXXX.DOM.2	80mm bore + stroke
	C.100.XXXX.DOM.2	100mm bore + stroke

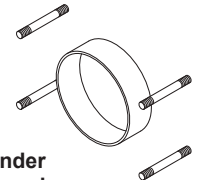


Non-magnetic versions are also available for example: **A.XXX.XXXX.DOM.2**

Stainless steel piston rod and/or Viton** seals are also available.

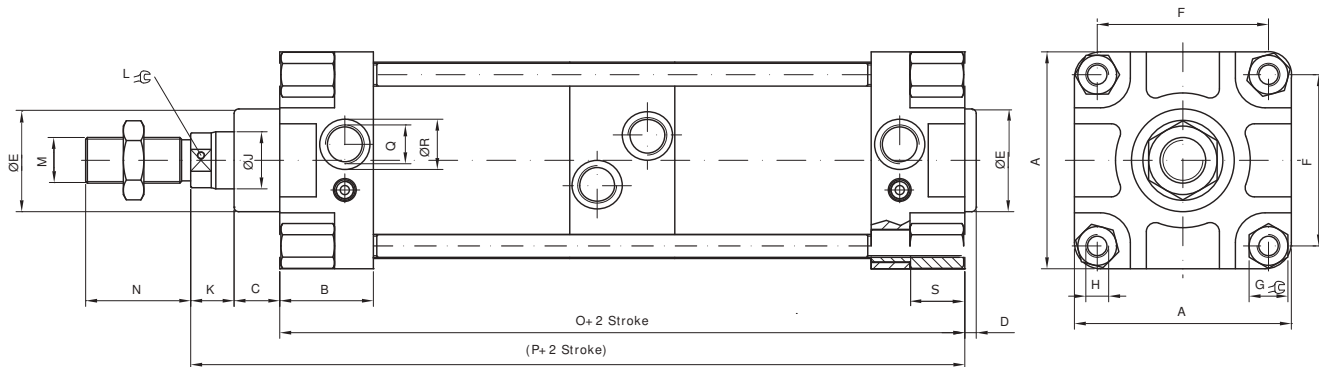
For these versions a special project code will be generated by our factory.

**A maximum temperature limitation of 100 C for the magnet to be effective when sensors are being used.



This Cylinder has an external tie-rod tube profile.

A single rod passing through both cylinder covers used to increase force, for this reason both cylinder strokes are exactly the same.



CNOMO Pneumatic Cylinder

Double Acting Tandem Ø 125mm - 250mm

Technical information

Operating pressure:	Max. 10 bar
Temperature range:	-10°C...+80°C (Dry air for below 0°C)
Housing/end caps:	Aluminium
Rod:	C45 chromium plated steel (Optional stainless steel)
Seals:	NBR (Optional Viton -10°C...+150°C)
Lubricant:	Not required
Operating medium:	5 micron filtered, lubricated or non-lubricated compressed air.



The picture above is an indication of design only.
See dimensional drawings.

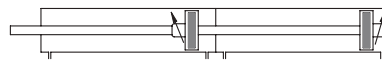
Other information:

Sensors & seal kits are available for this product, see data sheet M8200.
 Mountings are available for Ø 125 - 200mm only, see data sheets M0024/M4200/M4201.

Ø	A	B	C	D	ØE	F	G	H	ØJ	K	L	M	N	O	P	Q	ØR	I
125	140	48.5	20	5	55	110	22	M12	30	27	27	M27x2	63	230	277	G1/2	27	34
160	180	60	35	5	65	140	27	M16	40	15	36	M36x2	85	282	332	G3/4	35	42
200	220	59	35	5	65	175	27	M16	40	15	36	M36x2	85	284	334	G3/4	35	42
250	280	60	50	5	90	220	38	M20	50	30	41	M36x2	85	382	462	G3/4	35	50

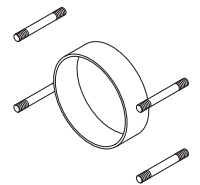
Dimensional drawings & ordering information

To order:	C.125.XXXX.DOM.2	125mm bore + stroke
	C.160.XXXX.DOM.2	160mm bore + stroke
	C.200.XXXX.DOM.2	200mm bore + stroke
	C.250.XXXX.DOM.2	250mm bore + stroke



Length of cushioning:

Ø 125	35mm
Ø 160	45mm
Ø 200	45mm
Ø 250	50mm



This Cylinder has an external tie-rod tube profile.

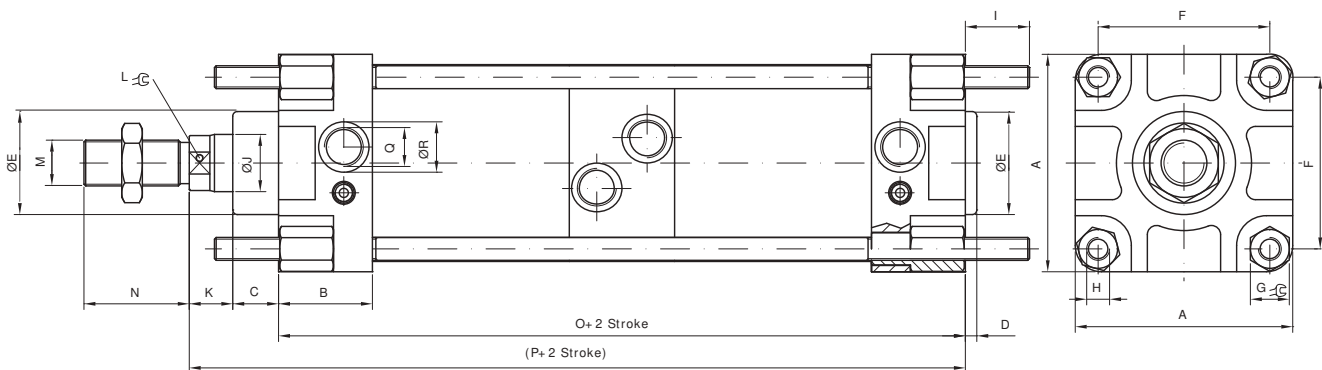
Non-magnetic versions are also available for example: **A.XXX.XXXX.DOM.2**

Stainless steel piston rod and/or Viton** seals are also available.

For these versions a special project code will be generated by our factory.

** Ø 125/160/200mm only, a maximum temperature limitation of 100 C for the magnet to be effective when sensors are being used.

A single rod passing through both cylinder covers used to increase force, for this reason both cylinder strokes are exactly the same.



CNOMO Pneumatic Cylinder

Double Acting Through-Rod \varnothing 32mm - 100mm

Technical information

Operating pressure: Max. 10 bar
Temperature range: -10°C...+80°C (Dry air for below 0°C)
Housing/end caps: Aluminium
Rod: C45 chromium plated steel (Optional stainless steel)
Seals: NBR (Optional Viton -10°C...+150°C)
Lubricant: Not required
Operating medium: 5 micron filtered, lubricated or non-lubricated compressed air.



The picture above is an indication of design only.
 See dimensional drawings.

Other information:

Sensors & seal kits are available for this product, see data sheet M8200.
 Mountings are available, see data sheets M0024/M2201.

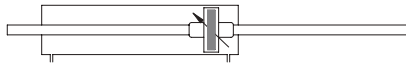
\varnothing	A	B	C	D	$\varnothing E$	F	G	H	I	$\varnothing J$	K	L	M	N	O	P	Q	$\varnothing R$
32	46	25	15	33	25	59	6	M6	15.5	12	10	10	M10	20	80	130	G 1/8	15
40	52	29	15	40	32	80	6	M6	15.5	18	19	15	M16x1.5	36	110	178	G1/4	20
50	66	29	15	49	32	74	14	M8	20.5	18	19	15	M16x1.5	36	110	178	G1/4	20
63	75	34	20	59	45	81	14	M8	20.5	22	19	19	M20x1.5	46	125	203	G3/8	23
80	95	41	20	75	45	68	17	M10	23.5	22	19	19	M20x1.5	46	125	203	G3/8	23
100	115	44	20	90	55	88	17	M10	23.5	30	27	27	M27x2	63	145	239	G1/2	27.5

Dimensional drawings & ordering information

Length of cushioning:

\varnothing 32	28mm
\varnothing 40	28mm
\varnothing 50	32mm
\varnothing 63	32mm
\varnothing 80	40mm
\varnothing 100	40mm

To order: C.032.XXXX.DOM.1 32mm bore + stroke
 C.040.XXXX.DOM.1 40mm bore + stroke
 C.050.XXXX.DOM.1 50mm bore + stroke
 C.063.XXXX.DOM.1 63mm bore + stroke
 C.080.XXXX.DOM.1 80mm bore + stroke
 C.100.XXXX.DOM.1 100mm bore + stroke

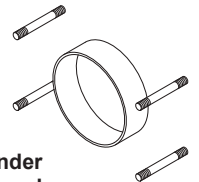


Non-magnetic versions are also available for example: A.XXX.XXXX.DOM.1

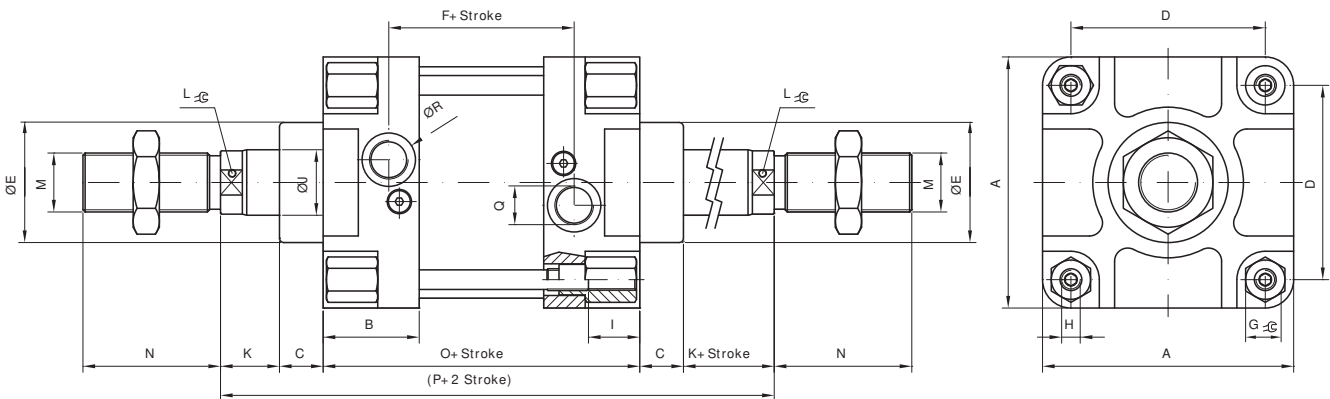
Stainless steel piston rod and/or Viton** seals are also available.

For these versions a special project code will be generated by our factory.

**A maximum temperature limitation of 100 C for the magnet to be effective when sensors are being used.



This Cylinder has an external tie-rod tube profile.



CNOMO Pneumatic Cylinder

Double Acting Through-Rod \varnothing 125mm - 320mm

Technical information

Operating pressure:	Max. 10 bar
Temperature range:	-10°C...+80°C (Dry air for below 0°C)
Housing/end caps:	Aluminium
Rod:	C45 chromium plated steel (Optional stainless steel)
Seals:	NBR (Optional Viton -10°C...+150°C)
Lubricant:	Not required
Operating medium:	5 micron filtered, lubricated or non-lubricated compressed air.



The picture above is an indication of design only.
See dimensional drawings.

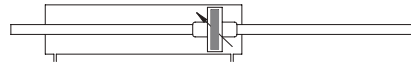
Other information:

Sensors & seal kits are available for this product, see data sheet M8200.
 Mountings are available for \varnothing 125 - 200mm only, see data sheets M0024/M4201.

\varnothing	A	B	C	D	$\varnothing E$	F	G	H		$\varnothing J$	K	L	M	N	O	P	Q	$\varnothing R$	I
125	140	48.5	20	110	55	86	22	M12	-	30	27	27	M27x2	63	145	239	G1/2	27.5	34
160	180	60	35	140	65	102	27	M16	-	40	15	36	M36x2	85	180	280	G3/4	35	42
200	220	59	35	175	65	104	27	M16	-	40	15	36	M36x2	85	180	280	G3/4	35	42
250	280	60	50	220	90	149	38	M20	-	50	30	41	M36x2	85	230	390	G3/4	35	50
320	340	60	82	270	110	170	46	M24	-	63	23	55	M36x2	90	230	440	G1	50	60

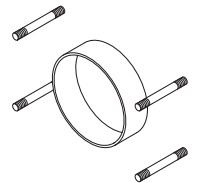
Dimensional drawings & ordering information

To order:	C.125.XXXX.DOM.1	125mm bore + stroke
	C.160.XXXX.DOM.1	160mm bore + stroke
	C.200.XXXX.DOM.1	200mm bore + stroke
	C.250.XXXX.DOM.1	250mm bore + stroke
	C.320.XXXX.DOM.1	320mm bore + stroke



Length of cushioning:

\varnothing 125	35mm
\varnothing 160	45mm
\varnothing 200	45mm
\varnothing 250	50mm
\varnothing 320	50mm



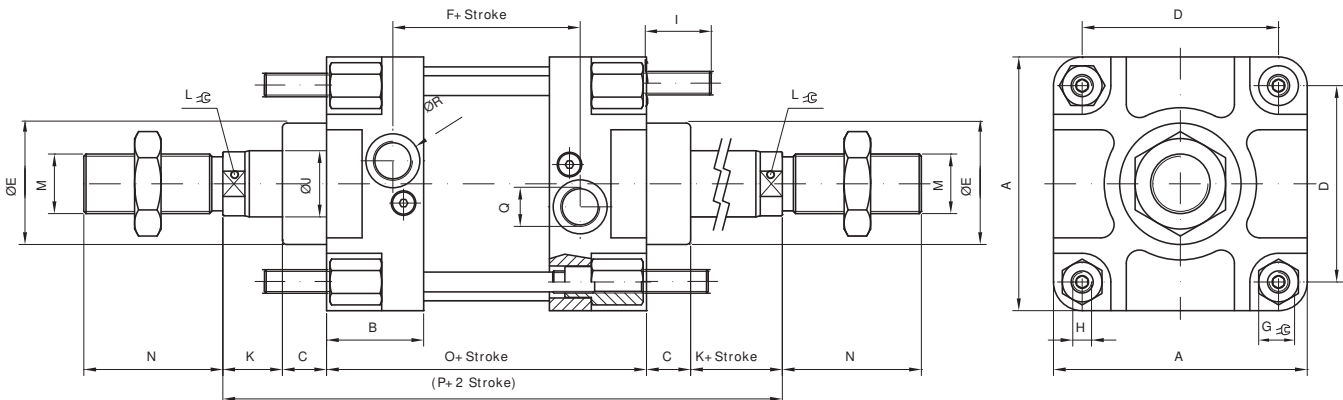
Non-magnetic versions are also available for example: **A.XXX.XXXX.DOM.1**

Stainless steel piston rod and/or Viton** seals are also available.

For these versions a special project code will be generated by our factory.

** \varnothing 125/160/200mm only, a maximum temperature limitation of 100 C for the magnet to be effective when sensors are being used.

This Cylinder has an external tie-rod tube profile.

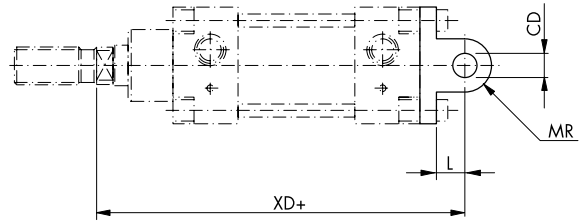
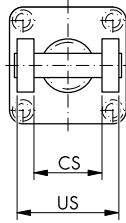


CNOMO Cylinder Mountings

Female Trunnion

Code	∅	CS	US	L	XD	CD	MR
16.001.01	32	26	45	10	123	8	9
16.001.02	40	33	52	16	168	12	12
16.001.03	50	33	65	16	170	12	12
16.001.04	63	47	75	20	194	16	17
16.001.05	80	47	95	20	196	16	17
16.001.06	100	57	115	25	229	20	21

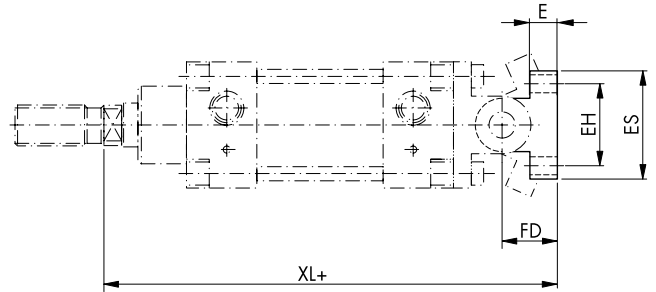
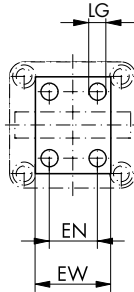
Includes bolt & fixing screws



Trunnion Mounting Bracket

Code	∅	EW	EN	LG	XL	FD	E	EH	ES
16.003.01	32	25	-	7	141	18	8	28	40
16.003.02	40	32	16	9	194	26	10	38	52
	50	32	16	9	196	26	10	38	52
16.003.04	63	46	25	11	228	34	12	54	75
	80	46	25	11	230	34	12	54	75
16.003.06	100	56	32	14	270	41	16	90	115

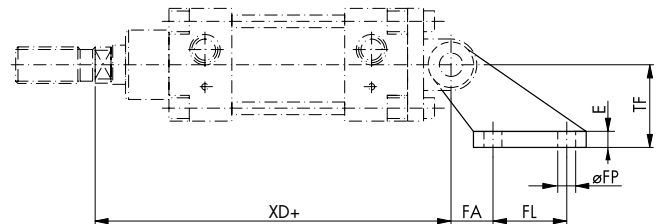
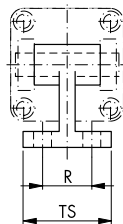
For use with
Female Trunnion
16.001.0X



Mounting Flange 90°

Code	∅	TS	R	FP	XD	FA	FL	E	TF
16.004.01	32	41	25	7	123	18	20	8	32
16.004.02	40	52	32	9	168	25	32	10	45
	50	52	32	9	170	25	32	10	45
16.004.04	63	63	40	11	194	32	50	12	63
	80	63	40	11	196	32	50	12	63
16.004.06	100	80	50	14	229	40	70	16	90

For use with
Female Trunnion
16.001.0X



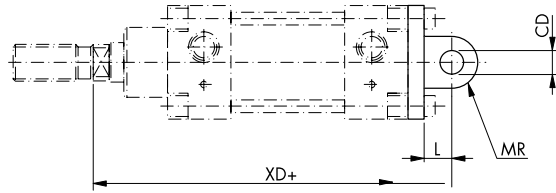
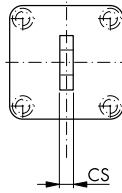
CNOMO Cylinder Mountings

Male Trunnion

Code	∅	CS	CD	L	MR	XD
16.002.01	32	26	10	12	10	125
16.002.02	40	28	12	15	12	167
16.002.03	50	32	12	17	12	171
16.002.04	63	40	16	20	16	194
16.002.05	80	50	16	20	16	196
16.002.06	100	60	20	25	20	229

Includes fixing bolts.

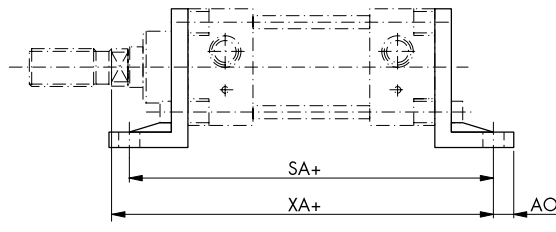
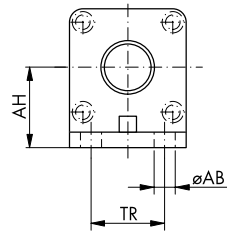
Not for use with through rod version cylinders.



Mounting Bracket

Code	∅	AH	TR	AB	AO	SA	XA
16.005.01	32	32	28	9	8	134	132
16.005.02	40	36	36	9	8	164	171
16.005.03	50	45	45	11	8	180	179
16.005.04	63	50	55	11	10	195	199
16.005.05	80	63	70	14	12	211	207
16.005.06	100	73	90	14	12	231	235

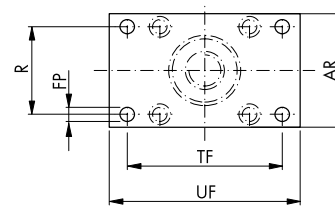
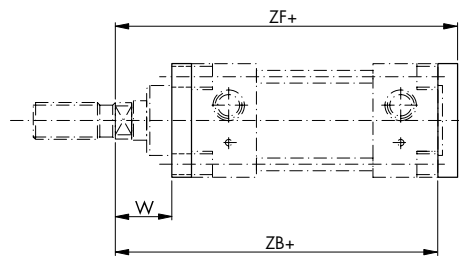
Includes fixing bolts
(One bracket supplied).



Mounting Plate

Code	∅	W	R	FP	TF	UF	AR	ZF	ZB
16.006.01	32	17	33	9	68	80	45	113	105
16.006.02	40	26	40	9	78	90	52	152	144
16.006.03	50	24	49	1	94	110	65	154	144
16.006.04	63	29	59	1	104	120	75	174	164
16.006.05	80	27	75	14	130	150	95	176	164
16.006.06	100	39	90	14	150	170	115	204	192

Includes fixing bolts
(One plate supplied).



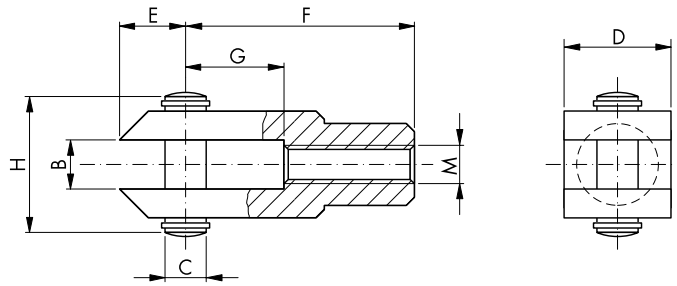
CNOMO Cylinder Mountings

Clevis

Code	Ø	M	B	C	D	E	F	G	H
16.008.01	32	M10x1.5	11	8	22	9	36	16	28
16.008.02	40	M16x1.5	18	12	26	13	51	25	44
	50								
16.008.03	63	M20x1.5	22	16	34	17	63	33	53
	80								
16.008.04	100	M27x2	30	20	42	20	85	40	73
	125								
16.008.05	160	M36x2	40	25	50	25	115	40	95
	200								

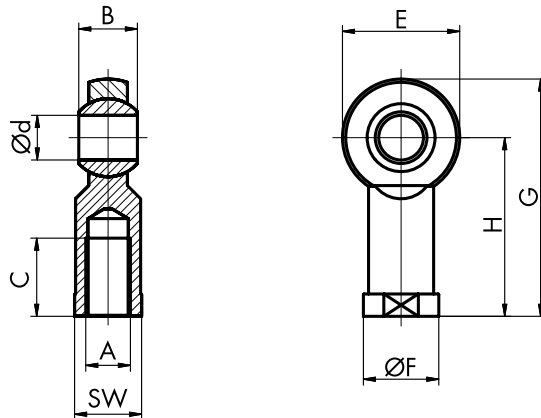
Ø 32 - 100mm
Retaining spring clip & pin included (not shown).

Ø 125 - 200mm
Pin & circlips included.



Spherical Rod End

Code	Ø	A	d	B	E	F	H	G	C	SW
16.009.01	32	M10x1.5	10	14	28	19	43	57	20	17
18.009.03	40	M16x1.5	16	21	42	27	64	85	28	22
	50									
18.009.04	63	M20x1.5	20	25	50	34	77	102	33	30
	80									
18.009.05	100	M27x2	30	37	70	50	110	145	51	41
	125									
18.009.06	160	M36x2	35	43	80	58	125	165	56	50
	200									

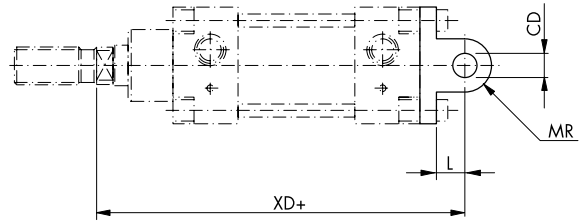
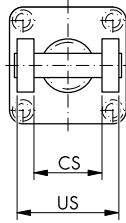


CNOMO Cylinder Mountings

Female Trunnion

Code	∅	CS	US	L	XD	CD	MR
16.001.07	125	57	140	30	233	20	24
16.001.08	160	72	180	35	285	25	30
16.001.09	200	72	220	35	285	25	30

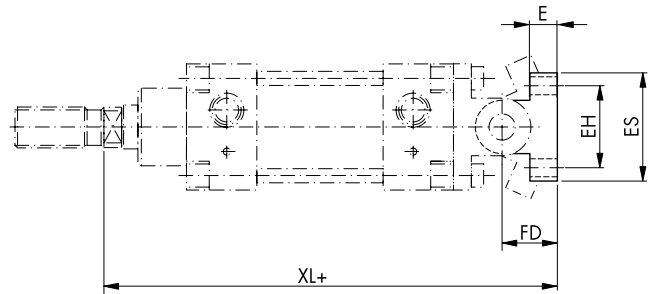
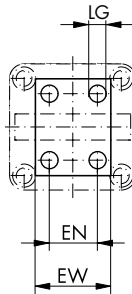
Includes bolt & fixing screws



Trunnion Mounting Bracket

Code	∅	EW	EN	LG	XL	FD	E	EH	ES
16.003.06	125	56	32	14	274	41	16	90	115
16.003.08	160	71	43	18	340	55	20	150	180
	200	71	43	18	340	55	20	150	180

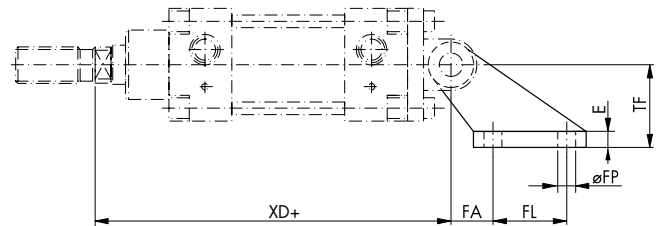
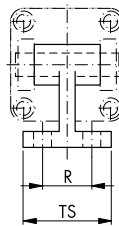
For use with
Female Trunnion
16.001.0X



Mounting Flange 90°

Code	∅	TS	R	FP	XD	FA	FL	E	TF
16.004.06	125	80	50	14	233	40	70	16	90
16.004.08	160	110	63	18	285	50	110	20	140
	200	110	63	18	285	50	110	20	140

For use with
Female Trunnion
16.001.0X

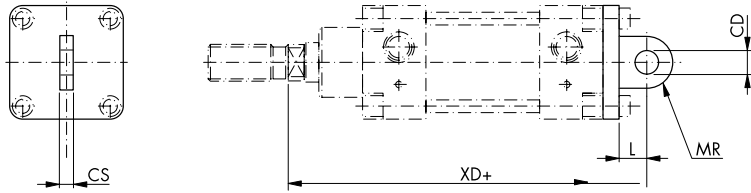


CNOMO Cylinder Mountings

Male Trunnion

Code	Ø	CS	CD	L	MR	XD
16.002.07	125	70	25	30	25	238
16.002.08	160	90	30	35	30	285
16.002.09	200	90	30	35	30	285

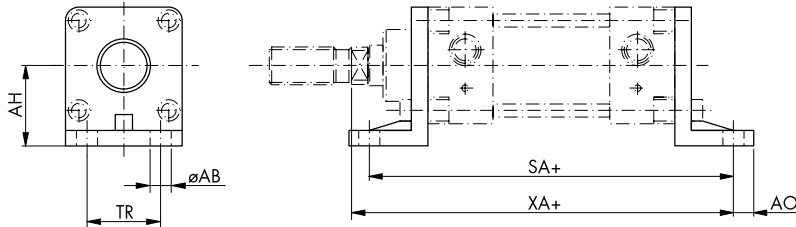
Includes fixing bolts.
Not for use with through rod version cylinders.



Mounting Bracket

Code	Ø	AH	TR	AB	AO	SA	XA
16.005.07	125	90	100	18	16	249	244
16.005.08	160	115	130	22	18	304	292
16.005.09	200	135	170	22	28	304	292

Includes fixing bolts
(One bracket supplied).



Mounting Plate

Code	Ø	W	R	FP	TF	UF	AR	ZF	ZB
16.006.07	125	31	110	18	180	205	140	208	192
16.006.08	160	30	140	22	228	260	180	250	230
16.006.09	200	30	175	22	228	300	220	250	230

Includes fixing bolts
(One plate supplied).

