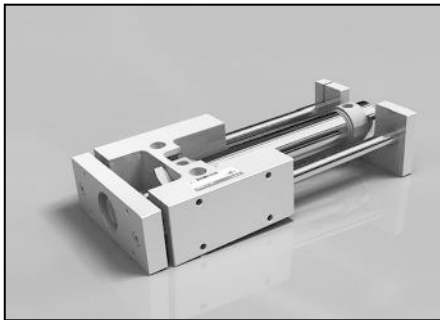


AGX / GX Series

Guide cylinder with guide unit / Bore size : Ø20, Ø25, Ø32, Ø40

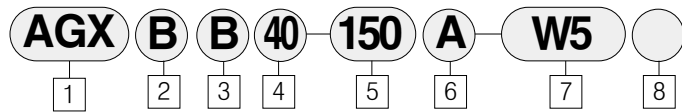
Actuator
Cylinder

AGX/GX Series



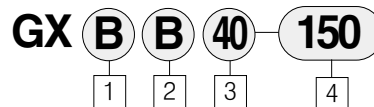
- Compact integration of AGX/GX series cylinder with guide rods. unit resists lateral loading and provides precise, non-rotating motion
- The AGX/GX series is equipped with a standard magnet for auto switch capability

How to order



- | | | |
|---|---|---|
| <p>1 Type
Guide cylinder
(Built-in magnet)</p> <p>2 Type of bearing
B : Bushing type</p> <p>3 Mounting
B : Standard</p> <p>4 Bore size
20 : Ø20mm</p> | <p>25 : Ø25mm
32 : Ø32mm
40 : Ø40mm</p> <p>5 Cylinder stroke(mm)
※ Refer to the above table</p> <p>6 Cushion
Blank : Rubber cushion
A : Air cushion</p> | <p>7 Auto switch
(Band mounted type / Grommet)
Blank : None
W5 : Reed switch
(Lead wire of 0,5m)
W5L : Reed switch
(Lead wire of 0,5m)</p> <p>8 Number of switches
Blank : 2 pcs.
S : 1pc.
N : N pcs.</p> |
|---|---|---|

How to order guide unit




- | | | |
|--|---|---|
| <p>1 Type of bearing
B : Bushing type</p> <p>2 Mounting
B : Standard</p> | <p>3 Bore size
20 : Ø20mm
25 : Ø25mm
32 : Ø32mm
40 : Ø40mm</p> | <p>4 Cylinder strokes(mm)
Ø20, Ø25: 25, 50, 75, 100, 125, 150, 200, 250, 300
Ø32 : 25, 50, 75, 100, 125, 150, 200, 250, 300, 350, 400
Ø40 : 25, 50, 75, 100, 125, 150, 200, 250, 300, 350, 400, 450, 500</p> |
|--|---|---|

Specifications

Fluid	Air
Action	Double acting
Proof pressure	15kgf/cm ² (213 psi)
Max. operating pressure	9.9kgf/cm ² (140 psi)
Min. operating pressure	0.5kgf/cm ² (7 psi)
Ambient and fluid temperature	-10°C~+70°C (14~160°F)(Anti-freezing)
Lubrication	Non-lube
Thread tolerance	KS 2 Class
Stroke tolerance	+1.4 0 mm

Air cylinder + guide unit

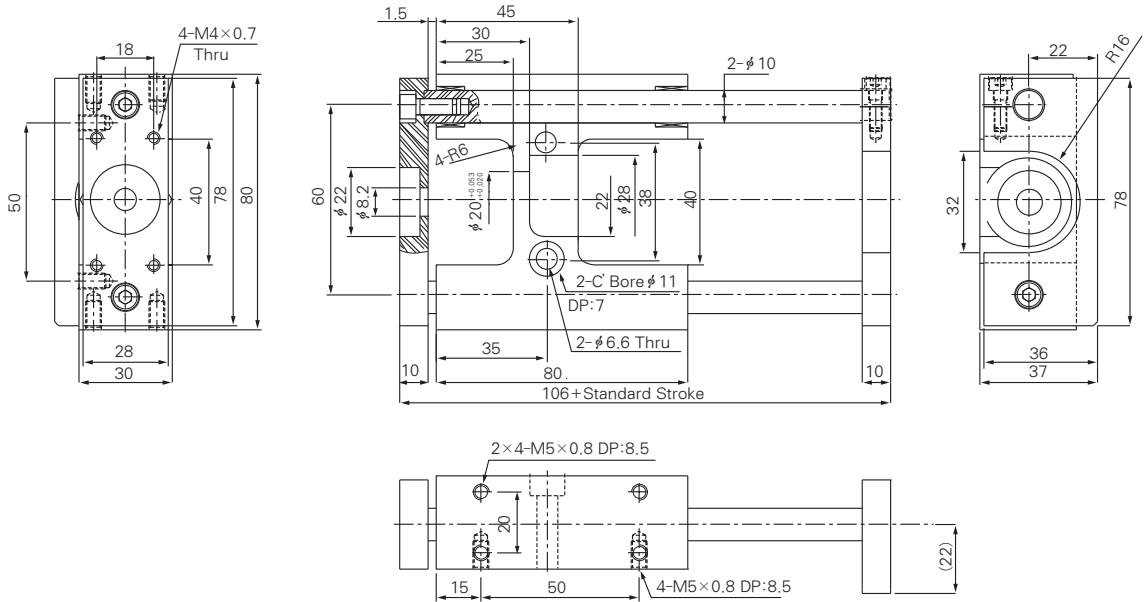
Action	Series	Bore size (mm)	Port size Rc(PT)	Standard stroke (mm)	Description	Operating pressure kgf/cm ² (psi)
Air cylinder(AX) + Guide unit(GX) 	AGX	Ø20	1/8	25, 50, 75, 100, 125, 150, 200, 250, 300	Bushing	0.5~9.9(7~140)
		Ø25				
		Ø32	1/4	25, 50, 75, 100, 125, 150, 200, 250, 300, 350, 400		
		Ø40				

Guide Cylinder : Series AGX

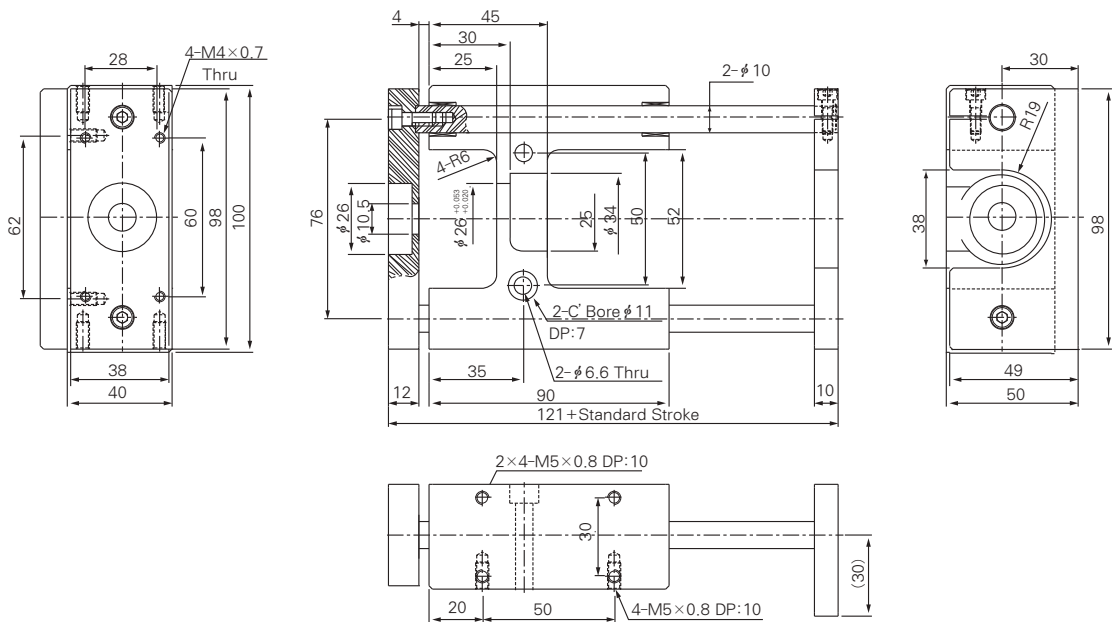
Unit : mm

- ACP
- APM
- AS
- AX
- AM2
- AM
- AL ALX
- AQ ADQ
- AQ2 ADQ2
- AJ AJM
- ABK
- ACK1
- NSK
- AG
- NGQ
- AGX GX**
- NP
- ADR
- AMR
- NDM
- ARD
- NST
- AST
- ASTH
- NLCD
- NLCS

φ 20 (AGXBB20- * *)



φ 25 (AGXBB25- * *)

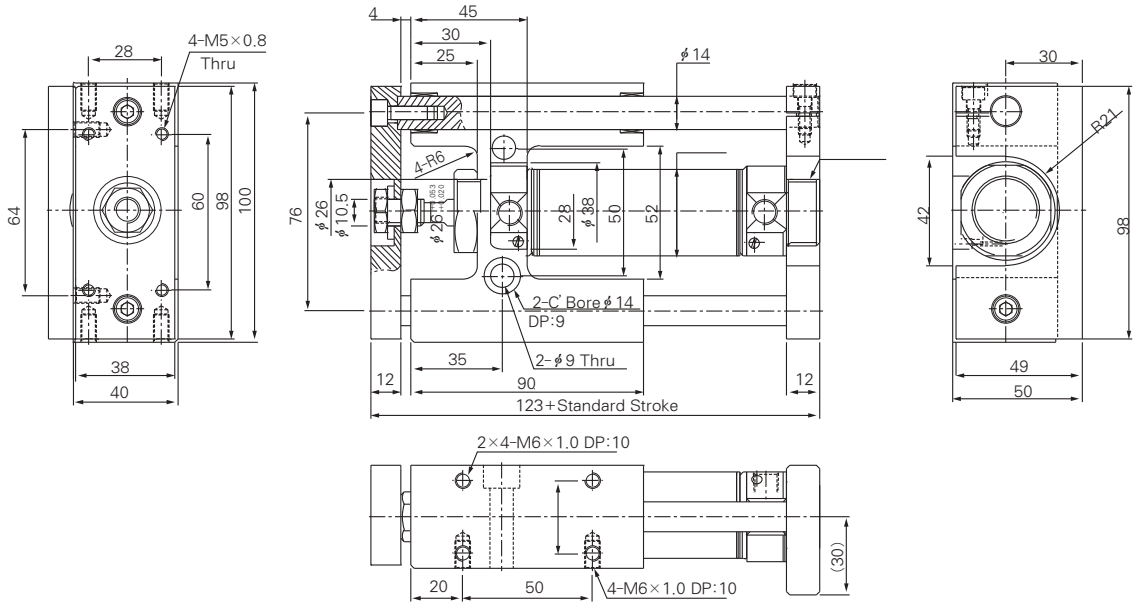


Series AGX/GX

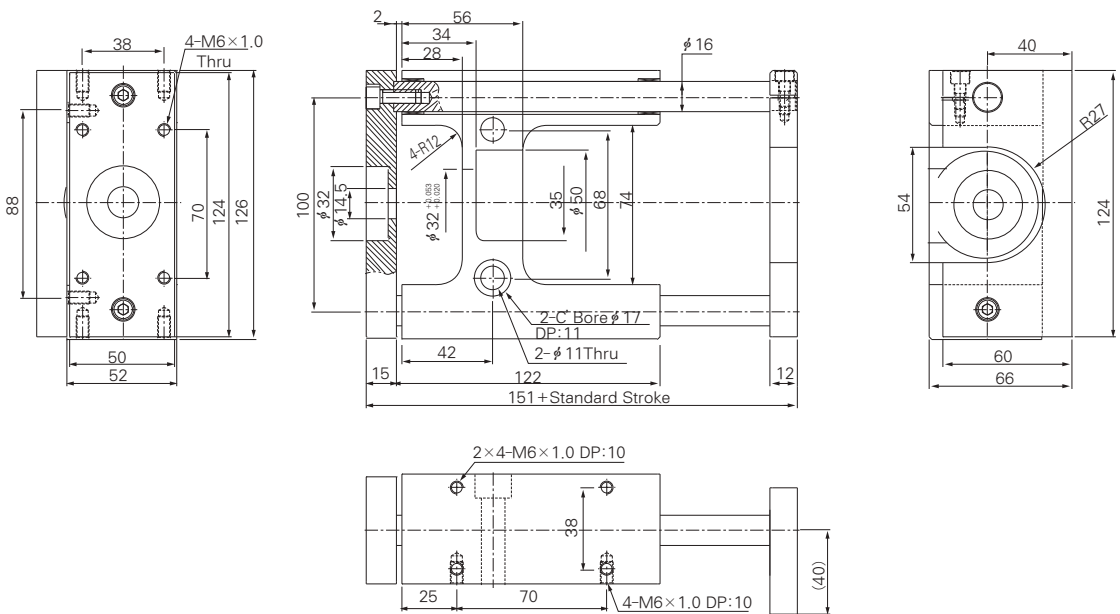
Guide Cylinder : Series AGX

Unit : mm

φ 32 (AGXBB32- * * *)



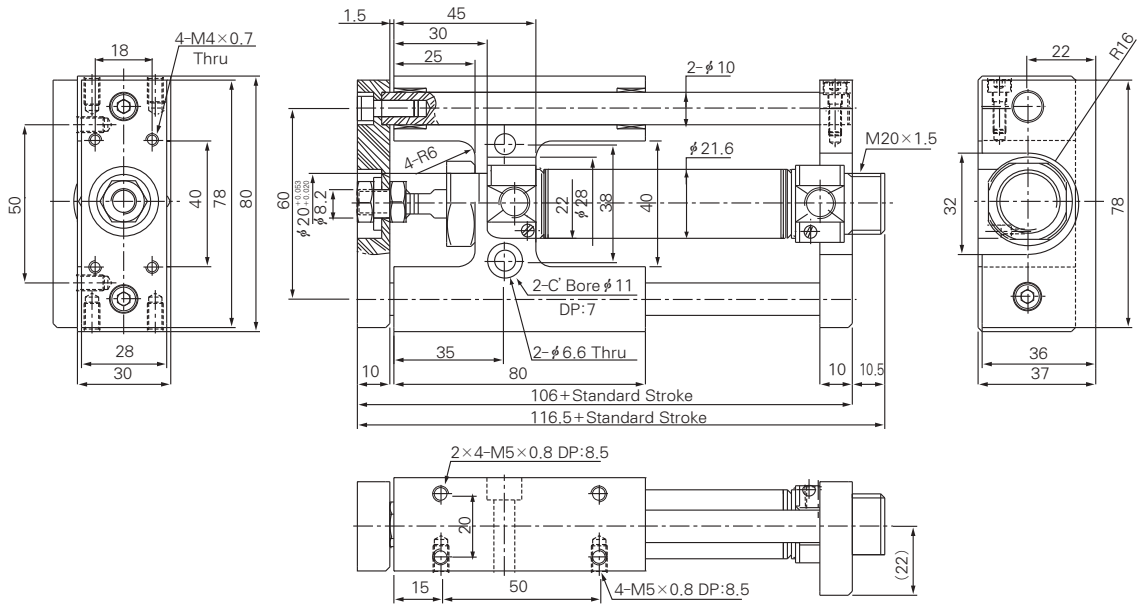
φ 40 (AGXBB40- * * *)



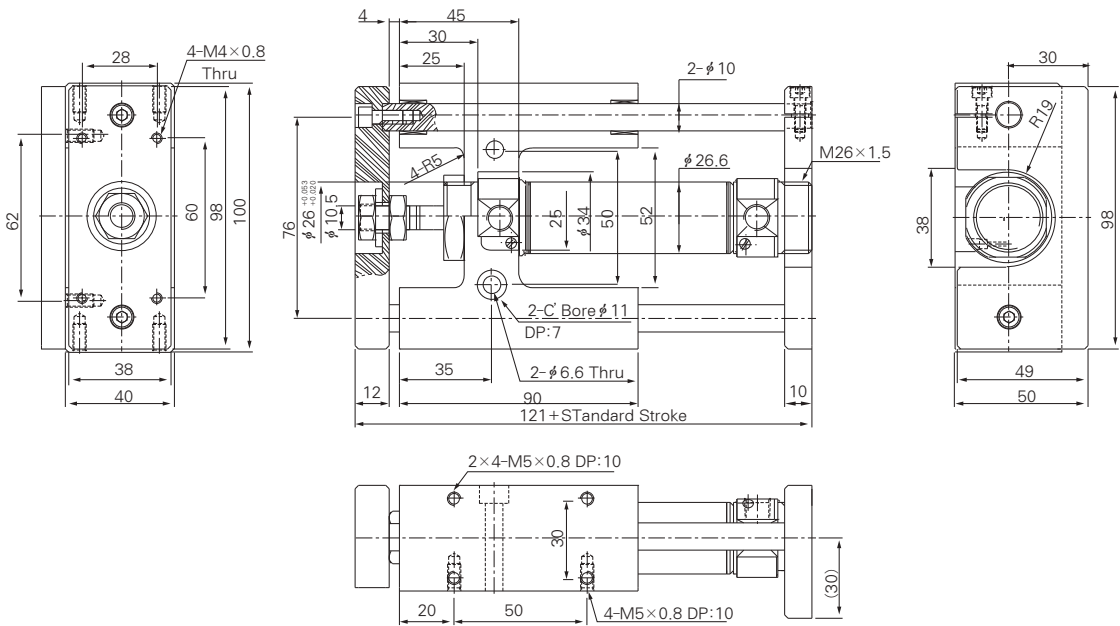
Guide Unit

Unit : mm

φ20(AGXBB20- * *)



φ25(AGXBB25- * *)



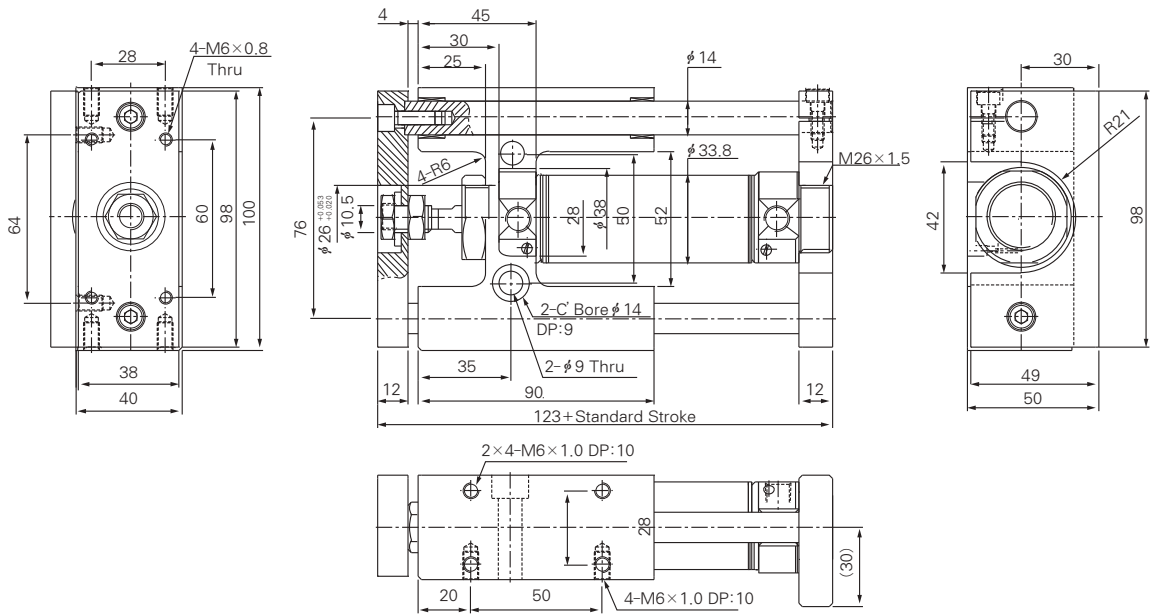
- ACP
- APM
- AS
- AX
- AM2
- AM
- AL ALX
- AQ ADQ
- AQ2 ADQ2
- AJ AJM
- ABK
- ACK1
- NSK
- AG
- NGQ
- AGX GX**
- NP
- ADR
- AMR
- NDM
- ARD
- NST
- AST
- ASTH
- NLCD
- NLCS

Series AGX/GX

Guide Unit

Unit : mm

φ 32 (AGXBB32- * * *)



φ 40 (AGXBB40- * * *)

